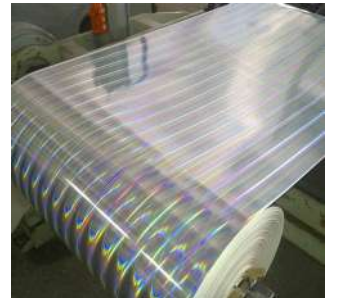
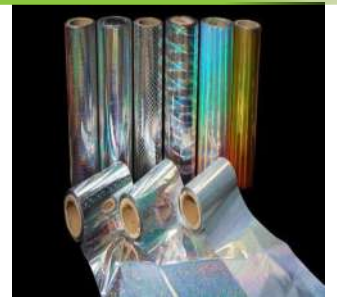


LABEL STOCKS

METALLIZED PAPERS/ PAPER BOARDS



Progress Through Innovation

LABEL STOCKS

Chemline is one of the largest manufacturers of various different kinds of Industrial Adhesive, Coatings, Etc Manufacturing them for the last 33 years. We have More than 500 different products including a range of Pressure Sensitive Adhesives (PSA) based on Hot Melts, Water-Based Dispersions and Solution Polymers based PSA's

We have perfected these pressure sensitive adhesives over a period of last 33 years.

Our venture on Label Stocks has primarily emerged out of Chemline's strength in manufacturing PSA's required for Label Stocks, Industrial Tapes and other Allied Products

Apart from good quality adhesives, to manufacture best of the Label Stocks required by this growing Printed Label Industry, Both in Roll form and Sheet form Digital and Offset Printing Industry. We have installed most modern facilities for Coating of **Hot Melt PSA's , Water Based PSA's , Solvent Based PSA's and Solvent less Release Coatings.**

Label Stocks consists of Adhesive Coated Face Stock and a Release Liner. The Release Liners and Adhesive Coated Face Stocks have been designed in a manner to enable Printability, Die-cutting and Matrix removal in on-line High speed narrow-web printing machines

Ready label Stocks have good peel and Loop Characteristics, Surface Printability, die-cutability and matrix removable on high speeds

Our R&D can design any functional and Speciality label Stock based on our variety of adhesive on specific customer demand.

FACE STOCKS

Chemline offers a range of Face stocks for variety of applications.

Paper based Face Stocks are:

- (i) CHROMO ART PAPER
- (ii) MIRROR COAT PAPER
- (iii) MAPLITHO PAPER
- (iv) METALIZED PAPER
- (v) HOLOGRAPHIC METALIZED PAPERS
- (vi) DIRECT THERMAL PAPERS
- (vii) THERMAL TRANSFER PAPER ETC.



All the above Face Stocks have excellent finish and printability.

Filmic Face Stocks are :

- (i) PP CLEAR
- (ii) PP WHITE
- (iii) METALIZED PP
- (iv) PET CLEAR
- (v) PET WHITE
- (vi) PET METALLIZED ETC.
- (vii) PE CLEAR AND METLLIZED



These films are either corona treated or chemically treated. Face stocks have excellent printability and has good bonding with inks and adhesives.

SILICON COATED RELEASE LINER

Chemline manufactures the following varieties of Release Liner based on Solventless Release Coating in various GSM.

- Glassine Paper Release
- Clay Coated Kraft
- Super Calendered Kraft
- Polyester Film Based

A perfect quality release liner exhibits properties such as

- Easy peel off
- Low heat shrinkage
- Lay-flatness
- Smoothness
- Stable release force
- Flexibility
- Die-cut performance



DATA SHEET

Release liners are also available for sale and can be designed as per customer requirements. We also supply release liners based on Polyester Films for application in Hygiene Products and Courier and other kinds of bag sealing liners.

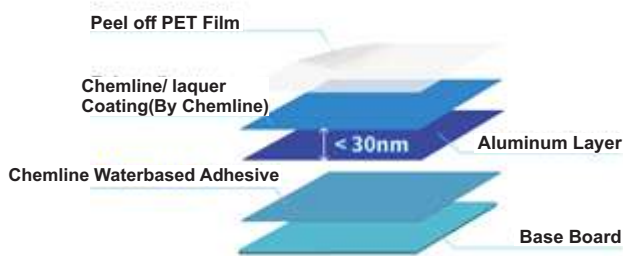
GRADE NAME	TOTAL GSM	CALIPER (MM)	FACE SUBSTRATE	FACE STOCK (GSM)	LINER (GSM)	ADHESIVE GSM	LINER SUBSTRATE	PEEL STRENGTH (N/cm)	LOOP TACK (N/cm)	SHAPE
CGH-8226	160 ± 12	0.130 ± 0.012	Chromo	80	62	16-20	Glassine	6.00 N/cm ± 10%	6.00 N/cm ± 10%	Roll
CGH-7206	145 ± 10	0.115 ± 0.010	Chromo	70	58	16-18	Glassine	5.50 N/cm ± 10%	5.50 N/cm ± 10%	Roll
CGH-7205	135 ± 10	0.110 ± 0.010	Chromo	70	50	14-16	Glassine	5.50 N/cm ± 10%	5.50 N/cm ± 10%	Roll
CGH-8225	145 ± 10	0.115 ± 0.010	Chromo	78	50	16-18	Glassine	6.00 N/cm ± 10%	6.00 N/cm ± 10%	Roll
CGH-6156	135 ± 10	0.110 ± 0.010	Chromo	60	58	16-18	Glassine	5.50 N/cm ± 10%	5.50 N/cm ± 10%	Roll
MGH-7206	145 ± 10	0.145 ± 0.010	Maplitho	70	60	14-16	Glassine	4.50 N/cm ± 10%	4.50 N/cm ± 10%	Roll
MGH-6165	125 ± 10	0.130 ± 0.010	Maplitho	60	50	14-16	Glassine	4.50 N/cm ± 10%	4.50 N/cm ± 10%	Roll
MGH-6156	135 ± 10	0.135 ± 0.010	Maplitho	60	60	14-16	Glassine	4.50 N/cm ± 10%	4.50 N/cm ± 10%	Roll
MCGH-8226	156 ± 12	0.115 ± 0.012	Silver Metallised	80	58	16-20	Glassine	5.50 N/cm ± 10%	5.50 N/cm ± 10%	Roll
MPGH-7166	150 ± 10	0.120 ± 0.010	Metallised Pet laminated film	70	58	16-18	Glassine	5.50 N/cm ± 10%	5.50 N/cm ± 10%	Roll
TGH-7206	148 ± 10	0.135 ± 0.010	Thermal Paper	72	58	16-18	Glassine	6.00 N/cm ± 10%	6.00 N/cm ± 10%	Roll
CSH-7206	155 ± 10	0.130 ± 0.010	Chromo	70	70	14-16	SCK	5.50 N/cm ± 10%	5.50 N/cm ± 10%	Sheet
CSKH- 8186	160 ± 12	0.133 ± 0.012	Chromo	80	64	16-20	SCK	6.00 N/cm ± 10%	6.00 N/cm ± 10%	Roll/Sheet
CSH-8199 (S)	185 ± 15	0.155 ± 0.010	Chromo	80	90	14-16	SCK	5.50 N/cm ± 10%	5.50 N/cm ± 10%	Sheet
CSH-8212 (S)	215 ± 15	0.195 ± 0.010	Chromo	80	120	14-16	SCK	5.50 N/cm ± 10%	5.50 N/cm ± 10%	Sheet
CSH-9189 (S)	200 ± 15	0.165 ± 0.010	Chromo	90	90	20-22	SCK	6.50 N/cm ± 10%	6.50 N/cm ± 10%	Sheet
CSH-9212 (S)	230 ± 15	0.195 ± 0.010	Chromo	90	120	20-22	SCK	6.50 N/cm ± 10%	6.50 N/cm ± 10%	Sheet
CSH-7209(S)	175 ± 15	0.148 ± 0.010	Chromo	70	90	14-16	SCK	6.00 N/cm ± 10%	6.00 N/cm ± 10%	Sheet
CSH-9209(S)	200 ± 15	0.165 ± 0.010	Chromo	90	90	18-20	SCK	6.50 N/cm ± 10%	7.00 N/cm ± 10%	Sheet
CSH-8130(S)	225 ± 15	0.190 ± 0.010	Chromo	80	130	14-16	CCK	5.50 N/cm ± 10%	5.50 N/cm ± 10%	Sheet
MCSH-8226	170 ± 15	0.140 ± 0.010	Silver Metallised	80	70	18-20	SCK	6.50 N/cm ± 10%	6.50 N/cm ± 10%	Sheet
MCCH-8229	197 ± 15	0.165 ± 0.010	Silver Metallised	90	87	18-20	CCK	6.00 N/cm ± 10%	6.00 N/cm ± 10%	Sheet
BHCK-2182	413 ± 17	0.550 ± 0.022	SBS BOARD	275	120	16-20	CCK	7.00 N/cm ± 10%	7.00 N/cm ± 10%	Sheet
PWGH-5206	123 ± 10	0.122 ± 0.010	PP White	43	62	16-20	Glassine	6.00 N/cm ± 10%	6.00 N/cm ± 10%	Roll
PMGH- 5206	125 ± 10	0.113 ± 0.010	PP Metallized	45	62	16-20	Glassine	4.50 N/cm ± 10%	4.50 N/cm ± 10%	Roll
PGH-5206 (M)	118 ± 10	0.120 ± 0.010	PP Matt	43	58	16-18	Glassine	4.50 N/cm ± 10%	4.50 N/cm ± 10%	Roll
PCGH-5156	123 ± 10	0.111 ± 0.010	PP Clear	45	60	16-20	Glassine	6.00 N/cm ± 10%	6.00 N/cm ± 10%	Roll
PCPH-5185	135 ± 10	0.110 ± 0.010	PP Clear	45	72	16-20	Polyester clear	6.00 N/cm ± 10%	6.00 N/cm ± 10%	Roll
WPEGH-5156	145 ± 10	0.110 ± 0.010	PET FILM	65	58	16-18	Glassine	6.00 N/cm ± 10%	6.00 N/cm ± 10%	Roll
ECGH-6166	118 ± 10	0.120 ± 0.010	ECHO PAPER	40	60	16-18	Glassine	5.80 N/cm ± 10%	5.80 N/cm ± 10%	Roll
PCSH-5226	127 ± 10	0.116 ± 0.010	PP Clear	45	64	18-22	SCK	6.00 N/cm ± 10%	6.00 N/cm ± 10%	Sheet
PWCH-5209	150 ± 10	0.155 ± 0.010	PP White	43	87	18-20	CCK	5.80 N/cm ± 10%	5.80 N/cm ± 10%	Sheet
PWCH-3186	110 ± 10	0.115 ± 0.010	PP White	25	67	16-18	CCK	5.50 N/cm ± 10%	5.50 N/cm ± 10%	Sheet
PMCH- 5182 (S)	182 ± 10	0.175 ± 0.010	PP Metallized	45	120	16-18	CCK	4.50 N/cm ± 10%	4.50 N/cm ± 10%	Sheet
PWCH-5220	180 ± 15	0.185 ± 0.015	PP White	43	120	16-18	CCK	5.80 N/cm ± 10%	5.80 N/cm ± 10%	Sheet
PWCH-5695	155 ± 15	0.160 ± 0.015	PP White	43	95	16-18	CCK	5.80 N/cm ± 10%	5.80 N/cm ± 10%	Sheet
WPECK- 5252	215 ± 10	0.185 ± 0.010	PET FILM	65	125	20-22	CCK	7.50 N/cm ± 10%	7.50 N/cm ± 10%	Sheet
ECCH-6165	186 ± 10	0.190 ± 0.010	ECHO PAPER	40	130	16-18	CCK	5.80 N/cm ± 10%	5.80 N/cm ± 10%	Sheet

SILVER METALLIZED PAPER / PAPER BOARD

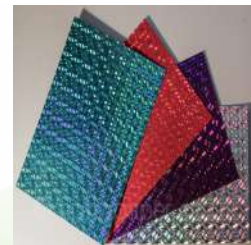
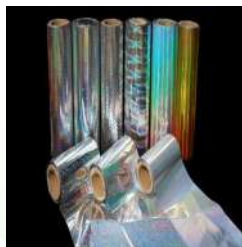
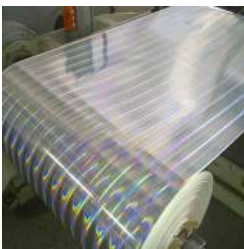
Chemline Silver Metallized paper is the best choice for Plastic-Free Packaging material with same metal effect and Shining like MET PET Laminated board, thus an Environment Friendly packing.

The simple shiny silver effect can easily fit into most design images and present a good-looking result, so different from the whiteboard image.

Metallized products can be used for various packaging like Mono cartons, Labels, Blister Labels, Gift wrapping and other miscellaneous applications.



- The material is manufactured film-free only with a Metallic layer of 30nm, even thinner than the ink layer.
- The material can be composed in natural conditions and recycled just as the plain packaging. it is made by transforming metal layer from silver coated Metallized PET Film



APPLICATION AREAS



Storage condition & Shelf life:- One Year when stored at 25 - 30°C/ 50 - 60 % RH.

Disclaimer: The above data/information and suggestions contained in this literature are based on our study and experience. We recommend that before using our products in full scale production, the customer should make his own tests to determine the suitability of the products. Our field staff and technical personnel shall be happy to assist you in conducting tests. **The specification given in the document is subject to be change due to continuous modification/ up gradation in the product.**