



**ADHESIVES FOR BOOK BINDING & JELLY GLUES**

# **Bonding Together**

Where Your **Adhesives and Coatings** Requirements Are Always Met

**HOTMELTS FOR BOOK BINDING**

**ANIMAL JELLY GLUES**

**WATER BASED ADHESIVES FOR  
BOOK BINDING**

**PROGRESS THROUGH INNOVATION**

[www.chemlineglobal.com](http://www.chemlineglobal.com)  
(An ISO 9001:2008, 14001 & 18001 Certified Company)

## ADHESIVES FOR HOTMELT BOOK BINDING & JELLY GLUES

With more than 28 years of experience in global supplies, **CHEMLINE** is one of the unique Indian companies manufacturing a wide range of **ADHESIVES & COATINGS**. It has proven leadership in number of adhesives segments in India which includes **Labelling Adhesives, Dry Lamination & Speciality Hot Melts including Perfect Book Binding Adhesives.**

**CHEMLINE** manufactures a full range of Hot Melts for Book Binding Adhesives with a brand name of **QUIKLOCK** in both granules & pillows form. There different grades for Art Paper Books, Maplitho Paper (Wood Free Paper) books for high speed multi-clamp machines etc. like **KOLBUS, MILLER-MARTINI** etc. Our products gives better lab test like Page Pull Test, Flex Test. It gives good adhesive layer for proper spine.

The products have been designed to be Odour free with Good Thermal Stability and reduced charring characteristics. These are special grades suitable for extreme climates conditions.

### HOTMELTS FOR BOOK BINDING

- Introducing Cool Bind Services for perfect Book Binding.
- Introducing Pillow Form Adhesive for Side Gluing.

### ANIMAL JELLY GLUES

### WATER BASED ADHESIVES FOR BOOK BINDING



# QUIKLOCK<sup>®</sup>

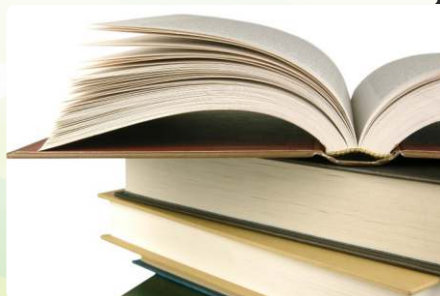
## HOTMELTS ADHESIVES FOR BOOK BINDING

Following are the General Purpose Grades for Perfect Book Binding:

Product	Grade	Viscosity, cps, at 150 °C,	Gluepot Temp. (°C)	Softening Temp. (°C)	Application	Specific Advantages
SPINE HOTMELT BOOK BINDING ADHESIVES FOR PERFECT BINDING (FOR MULLER MARTINI, KOLBUS MACHINES ETC.)	CH 155 SW	7000 ± 1000	130 - 160	85 ± 2	Show White	High Strength Light Yellow & Ivory White Hot Melt for High Speed Perfect Binding Machines.
	CH 155 SW (64)	7000 ± 1000	130-160	76 ± 2.0	Art & Wood Free for Spine Application (PIGMENTED GRANULES).	
	CH 699 TY	7000 ± 1000	130-160	76 ± 2.0	Art & Wood Free for Spine Application (NON-PIGMENTED GRANULES).	
	CH-639 GNP F	7000 ± 1000	130-160	78 ± 2.0	Maplitho / Wood Free for Spine Application. (PIGMENTED GRANULES).	All grades for Spine Applications having good page pull strength.
	CH 145 WMF	7000 ± 1000	130-160	78 ± 2.0	Maplitho / Wood Free Paper with Stitched Spine.	Excellent Binding with High GSM Maplitho/ Uncoated Paper with Good Spine Flexibility.
	CH 145 WH	5000 - 12000	130-160	80 ± 2.0		
SIDE GLUE	CH 135 YB	4000 ± 1000	130-150	80 ± 2.0	Side Glue for Art/Coated Paper & Laminated Paper. (Semi-PSA, Pillow Form)	Excellent Binding in Side Application for Coated/Art/Maplitho Paper both in Granule & Pillow Form.
	CH 135 Y6	4000 ± 1000	130-150	80 ± 2.0	Side Glue for Art/Coated Paper (Granule Form)	



*Perfect Book Binding Machine*





# QUIKLOCK®

## Book Binding Adhesive for Cold Climate

### BENEFITS-

- Books bound will withstand up -10 °C
- Flexibility of spine will be maintained at low temp.
- Give edge to book manufacturer & exporter of to explore colder regions of the world

Product	Grade	Viscosity @150° C	Gluepot Temp.	Softening point temp.	Advantages	Specific Advantages
Hotmelt Spine adhesive for perfect binding for cold climate	CH 145 YR	4000+1000	130-160	85±3	Suitable for Art paper and Mapliho paper	Flexibility of Spine maintained upto - 10°C
	CH 145WR	7000+1000	130-160	85±3		
	CH 639 GNP F	11000+1000	130-160	80±2	Suitable for Mapliho	Flexibility of Spine maintained upto - 5°C
Side Glue	CH 135 YR	4000+1000	130-160	80±2	Suitable for all	Flexibility of Spine maintained upto - 10°C

### COOL BIND ADHESIVE FOR UNIVERSAL BOOK BINDING PURPOSE

### BENEFITS-

- Low application temp.
- Reduced glue wastage with reduced charring
- Reduce machine maintenance
- Electric Saving



Product	Grade	Viscosity @150° C	Gluepot Temp.	Softening point temp.	Advantages	Specific Advantages
Hotmelt Spine adhesive for perfect binding	CH 399 TY	4000+1000	120-140	78±2	Suitable for Art paper and Mapliho paper	Low application temp.



## GENERAL PRECAUTIONS FOR USAGE OF HMBB GRADES

- Use correct grade for each job, i.e. Art Paper or Maplitho Paper etc.
- Use Hot Melt Cleaner (HMC 1000L) to clean the glue pot
- Use optimum temp. for each grade as mentioned in TDS.
  - Please do consider the extreme climate and maintain  $+10^{\circ}\text{C}$  in extreme winter and  $-10^{\circ}\text{C}$  in extreme summer.
  - Do not exceed the temp. which causes glue charring (burning).
  - $180^{\circ}\text{C}$  for regular Hotmelts and  $150^{\circ}\text{C}$  for Cool Bind Series.

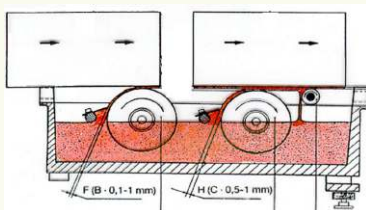


Fig: Glue Pot

- Prevent paper dust and other foreign particles entering the Molten Glue. Cutter and Notcher should be maintained well while doing perfect binding job.

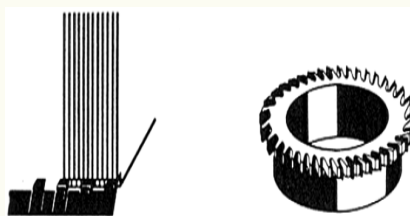


Fig: Notching

- Please keep the adhesives layer from 0.7 mm  $\pm$  0.2 mm according to thickness of the book spine.
- Please design the book in the such that Ink, Varnish or Lamination Film or any coatings does not comes in Spine or Binding Area where the adhesive is applied. As the ink and come coatings contains wax which reacts with the adhesive and spine tends to open. The lamination and UV coating creates a barrier between Adhesive and Paper.
- Avoid or clean the anti setoff powder from the inner side of the cover to avoid problems of spine opening.
- Creasing of book covers should be accurate to avoid spine swelling.
- Please avoid using chemicals like Diesel, Benzene, Oil or other chemicals to come in direct contact of spine of the book. These chemicals can penetrate the paper and cause chemical reaction with adhesive causing a binding failure.
- Don't give any immediate pressure over the spine of the book coming out of the machine. May deform the spine due to uneven pressure. Also may push the adhesive deeper in the books and distorting the aesthetic look of the book. This may also cause the gaps or uneven layer.

**HAPPY BINDING !!!**

Our adhesive can run all kind of Perfect Binding Machine. As conventional hotmelt adhesive. We would be upcoming with PUR adhesive soon.

# QUIKLOCK<sup>®</sup>

## ANIMAL JELLY GLUES

Chemline was the first to start production of Jelly Glues in India. We offer grades for all kind of machines Automatic and Semi-Auto, for case making and rigid box making. The grades are relatively odourless (Fragrance Smell) and lighter colour.

Please take precautions of working temp. in extreme climate conditions as either the viscosity may differ due to ambience temperature.

Add water according to the usage and substrate

Automatic	Product	Grade	Viscosity, cps, at 60 °C	Gluepot Temp. (°C)	Softening Temp. (°C)	Specific Advantages
Automatic /Semi-Auto	ANIMAL JELLY GLUE FOR HARD CASE / RIGID BOX APPLICATION (FOR KOLBUS, HAROUF, MEMORY, MEGA BOUND TYPE M/C'S)	GC 3560 F2 (Light Brown)	2000±300	70±10	50±5.0	1. Animal Glue odor free
Automatic /Semi-Auto		GC 3560 F18 (Blue Green)	2000±300	70±10	50±5.0	2. Free Flowing characteristics of melt & good spreading.
Automatic /Semi-Auto		GC 3560 F3/ F9 (Brown Transparent)	2000±300	60±5	50±5.0	3. Product performs well under ambient conditions of humidity and temperature.
Automatic /Semi-Auto		GC 3560 F12 Light Yellow Transparent	700±300	60±5	50±5.0	4. Superior bond formation between substrates. 5. Grade GC 3560F12 works at low temperature.



# CHEMICRYL®

## WATER BASED COLD GLUES

Water based Adhesive for Hard bound books coffee table books. Suitable for manual and machine applications. Products running successfully on Kolbus, Sigloch and other machineries Also used for tape pasting on the spine of books for hard bound and stationaries product. Good Performance for rounding and end paper pasting. Also for paper to paper and paper to board pasting.

Product	Grade	Viscosity, cps, at 25 °C,	pH	Solids %	Application	Specific Advantages
COLD BOOK BINDING ADHESIVE FOR CASING IN APPLICATION	SS 6010 CI	10,000±1000	5.0±1.0	53±1.0	For Casing in Purpose on Fully Automatic m/c's	Good Bonding with PVC / Laminated cover with Quick Drying Characteristics
COLD BOOK BINDING ADHESIVES	WA 40	37,500±2500	5.0±1.0	40±1.0	For Manual Paper to Board / Paper to Paper Pasting	Plasticized Products With Good Flexibility & Quick Drying
	BDG 54	40,000±5000	5.0±1.0	50±1.0		
WATER BASED/ ADHESIVES FOR BOX MAKING/CASE MAKING M/C'S.	ABM 60	8000±500	5.5±1.0	53±2.0	Suitable for Rigid Box / Hard bound Book Case making on Automatic Machine.	Good bonding strength with Paper to Board / Coated Paper to Board.







## GLOBAL PRESENCE

**Chemline India Ltd.** F-1, Sarda Chamber-1, Central Market, Prashant Vihar, Rohini,  
Delhi-110085 (INDIA) Ph : +91-11-27555999 (6 Lines), Fax : +91-11-27555992

**Enquiry from India For Bottle Labelling :** sales@chemlineglobal.com

**For Graphic Arts Products :** sales2@chemlineglobal.com

**For Flexible Packaging Products :** sales3@chemlineglobal.com

**For Speciality Hotmelts :** hmsales@chemlineglobal.com

**Enquiry from Countries other than India :** exports@chemlineglobal.com

**Other Miscellaneous Mails :** info@chemlineglobal.com



*Since 1990*



# Bonding Together

Where Your **Adhesives & Coatings** Requirements Are Always Met

## **ADHESIVES & COATINGS FOR FLEXIBLE PACKAGING INDUSTRY**

### LAMINATION ADHESIVES

- Acrylic Water Based
- PU Solvent Free - Mono & Bi-Component
- PU Solvent Based

### COATINGS

- Heat Seal - Water Based (Al-Foil to Al-Foil)
- UV Varnish
- Solvent Based Coatings
- Release & Primer Coatings
- Cold Seal Coatings

### PRESSURE SENSITIVE ADHESIVES

- Holograms
- Protective Films
- BOPP Tapes
- Label Stock

### HOTMELT ADHESIVES

- Side Sealing of WPP & Raffia Bags
- WAD Application
- Toffee Twist Wrapping
- Soap Wrapper Coating



With more than 28 years of experience in Global Supplies, **Chemline** is one of the unique Indian Companies manufacturing wide range of Adhesives & Coatings for Flexible Packaging Industry. It has proven its leadership in number of segments in Indian and Overseas Market, which includes PU Lamination Adhesives (Solvent Less & Solvent Based), Water based Adhesives, Water Based Heat Seal Coating UV Coatings, Top Coats, Hot-Melt for Side Sealing of WPP Bags, Waxes for WAD Application among others.

**CHEMICRYL®**

### ACRYLIC WATER BASED LAMINATION ADHESIVES

- Provides excellent bonding with Al-Foil, PET, MET PET, MET BOPP, PVC, BOPP, CPP with Paper.
- Used for making Liners, Gutkha/Pan Masala Pouches, Non-tearable paper etc.



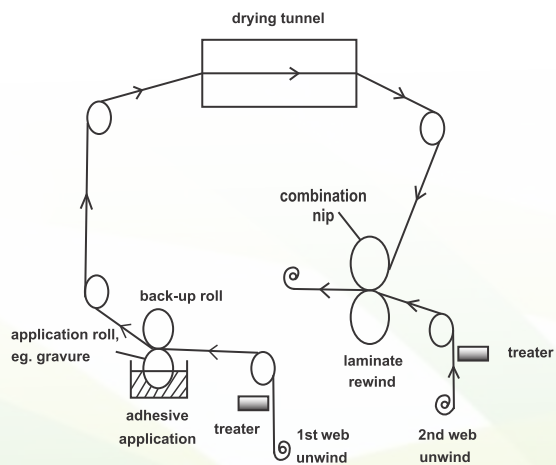
Typical Lamination Machine



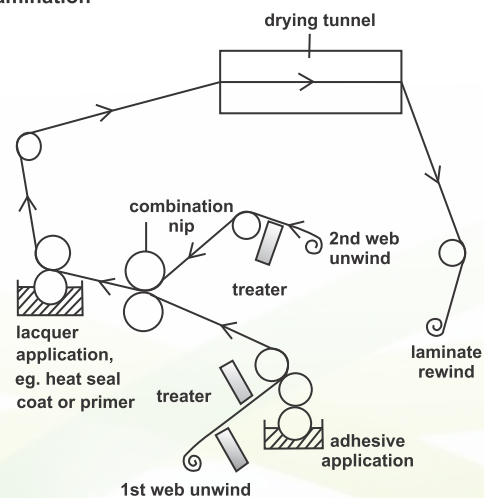


Product	Grade	Viscosity	Solids %	pH	Application	Specific Advantages
ADHESIVES FOR DRY & WET GRAVURE COATING MACHINES	DL 4509 N(3)	50±5 secs	43±1.0	7.0±1.0	Ready to use Acrylic Based Products for Lamination of Films like PET, PVC, CPP, BOPP or Aluminium Foil to Paper at High Speed of > 200 mtr/min.	- Results into Better Heat Resistance of Laminates.
	DL 4509 N	17±2 secs	43±2.0	7.0±0.5		- Faster binding with paper
	DL 5202 (30X)1	17±2 secs	43±2.0	8.0±0.5		- Performs better at speeds of >3000 pouches/min.
	DL 8020FF	17±2 secs	45±2.0	7.0±1.0		- For Transfer Metallization from PET to Paper.
	HD 300 (Hardener)	300±100 cps	70±1.0	9.0±0.5	2% to be Mixed with Adhesive.	- Application System can be cleaned by use of water. Best Suited for Film to Film Lamination. Improves Heat Resistance of Laminates.

Dry Lamination



Wet Lamination

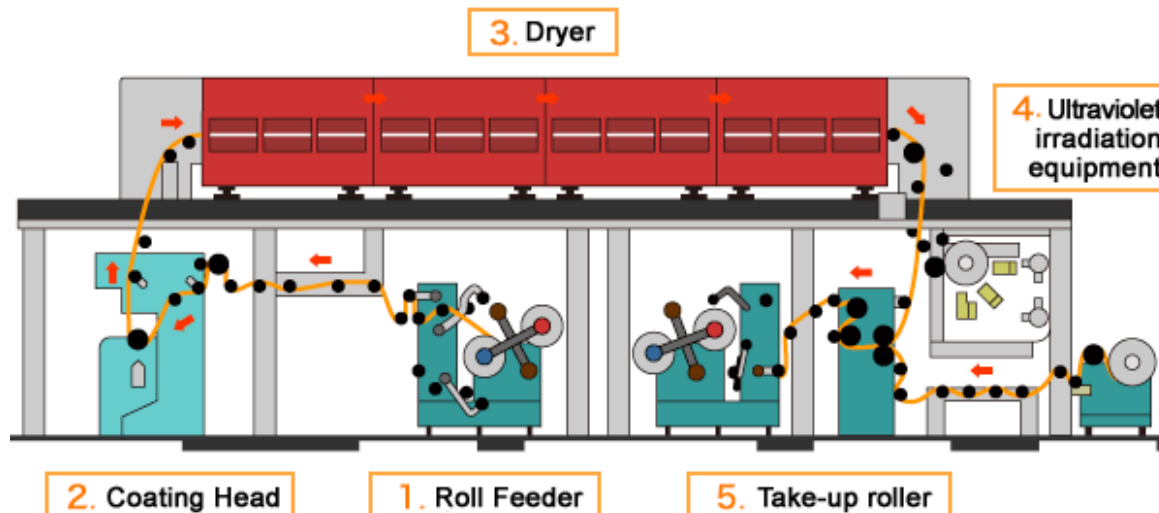


## ULTRAGLOSS® & CHEMIGLOSS®

### COATINGS

- Benzophenone free UV Coating.
- Excellent Gloss and Scuff Resistance.
- Low Migration Property.
- Fast curing and Good Heat Resistivity.
- No Foaming at high speed and provides Colorless coating without any yellow tinge on coated paper.
- UV Coating is preferable for Offline UV Coater, while solvent based OPV Coating can be done online while printing.

### UV Coating Process



### UV/OVER PRINT COATINGS FOR PAPER

Product	Grade	Viscosity, at 25°C	Scuff @ 2 lbs/sq. (Revolutions)	Gloss	Specific Advantages
UV COATING FOR OFFLINE APPLICATION	UVF 400 L 303	40 ± 10 sec.	Approx. 500	92-95%	- Good HR properties.
	UVF 400 L 40	40 ± 10 sec.	Approx. 500	90-92%	- Odorless UV for all types of papers with good gloss.
SOLVENT BASED OVER PRINT COATING	OPV S 25 (N)	35 ± 5 sec.	-	45-55%	- No Residual Tack. - No Foaming at High Speeds of 150 mtr/min. - Good Anchoring on all types of printed paper.

## AQUASEAL<sup>®</sup> & CHEMISEAL<sup>®</sup>

### AQUASEAL<sup>®</sup> - WATER BASED HEAT SEAL COATING

- Environment Friendly as it is Water Based
- For Al-Foil to Al-Foil Sealing.
- Can be applied by Normal Gravure Coater.
- Goods Sealability between wide range of temperatures



Product	Grade	Viscosity, at 25°C	Solids %	Application	Specific Advantages
<b>HEAT SEAL LACQUER FOR AL FOIL</b>	CHSL W (40)	70±2 secs	42±2	Used for Al Foil to Al Foil Sealing	- Suited for High Speed Sealing of Pouches. - Suited for making pharma blisters

### CHEMISEAL<sup>®</sup>

- Hot Stamping Foil Coating gives Good Bonding with PVC Cards, Coated Paper and other Substrates.

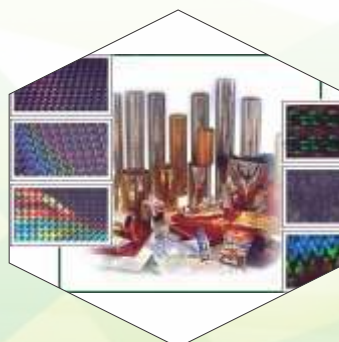
Product	Grade	Viscosity, at 25°C	Solids %	Application	Specific Advantages
<b>HOT FOIL STAMPING COATING</b>	HSF 25	20±5 secs	20±1	Suitable for Hot Foil Stamping Coating.	Provide Complete Transfer in Holograms & Transparent Appearance after Drying.

## CHEMICOAT<sup>®</sup> & AQUACOAT<sup>®</sup>

### CHEMICOAT<sup>®</sup> - RELEASE LACQUER / AQUACOAT<sup>®</sup> - PRIMER COATING

- Good for Release Coating of PET Films for Transfer Metalization, Holography & Printing to Paper.
- Primer Coating for PET and Paper for Permanent Metallization.
- Primer Coating also enables MET-PET Films to Print UV Ink over its surface.

Product	Grade	Viscosity, secs at 25 °C	Solids %	pH	Application	Specific Advantages
RELEASE LACQUER	RC 30	45±5	25±2.0	-	Coating on PET Film for Transfer Metalization & Transfer Printing.	1. Good Releasing Property. 2. Compatible for UV ink printing after transfer.
PRIMER FOR PET & PAPER	MPP 4030	30±5	41±2.0	8.0±0.5	Metallization Primer for Paper & PET Film	1. Base coat for PET/Paper for Permanent Metallization 2. Primer for Printing UV Ink on MET PET Films





**QUIKLOCK®****HOTMELT ADHESIVES**

**Chemline** manufactures wide range of Hotmelt Adhesive under the Brand Name of “**QUIKLOCK®**” in form of Granules, Bricks and Pillows for different applications. The products have been designed to be Odour Free with Good Thermal Stability and reducing charring characteristics. These are special grades suitable for extreme Climatic Conditions.



- **Side Sealing of WPP/Raffia Bags**



Product	Grade	Peel Strength	Viscosity cps, at 150°C	Gluepot Temp. (°C)	Softening (°C)	Application	Specific Advantages
HOTMELT ADHESIVE FOR SIDE SEALING OF WPP BAGS	CH 9028 SSH(9)	Machine Direction: 15-20 N/cm	35,000±5000	170-190	108±3	For Side Sealing of Woven Polypropylene, HDPE Bags through Nozzle Application.	- Strong bonding between PP to PP. - Passes minimum of 10 drops (25 Kg. sand bags at 6 - 8 ft. height) - Quick Bond Formation giving Higher Production Speeds.
	CH 9028 SSH	Cross Direction: 20-24 N/cm.	50,000±5000	170-185	105±5		- Good Heat Resistivity. - Better Mileage.
	CH 9028 SS(9)		50,000±5000	170-190	111±3		
	CH 9028 SSH(12)		17,000±3000	165-180	135±5		

## • WAD Application



Product	Grade	Viscosity at 150°C	Gluepot Temp. (°C)	Softening Temp. (°C)	Application	Specific Advantages
LAMINATION WAX FOR INDUCTION SEALING FOR WAD	CH 800 W	100±20 cps	120-150	103±5	<ul style="list-style-type: none"> <li>- For Lamination of Al Foil with Paper/ Board for WAD making.</li> <li>- Can be used separately or in combination as per desired results.</li> </ul>	<ul style="list-style-type: none"> <li>- Formulated as per FDA Regulations.</li> <li>- Suitable for Extreme Hot Weather Conditions.</li> </ul>
	CH 850 LW	40±10 cps	120-130	75±5		<ul style="list-style-type: none"> <li>- Easy absorption while induction sealing process &amp; provide clear de-lamination without any spots.</li> </ul>
	CH 850 LW(3)	50±20 cps	130-150	105±3		
	CH 135 W(IS)	1200±500 cps	130-140	75±5	<ul style="list-style-type: none"> <li>- For Induction Sealing of Glass Containers</li> </ul>	<ul style="list-style-type: none"> <li>- Formulated as per FDA Regulations.</li> <li>- No Residual Surface Tack.</li> </ul>

## • Toffee Wrapping & Butter Packaging



Product	Grade	Viscosity at 150°C	Gluepot Temp. (°C)	Softening Temp. (°C)	Application	Specific Advantages
WAX COATING FOR PAPER/ TOFFEE TWIST WRAPPER	PCW 104	1200±300 cps	140-160	105±3	In Paper Coating for Food Packaging & Toffee Twist Wrapper	<ul style="list-style-type: none"> <li>- Moisture Impermeable Characteristics</li> <li>- Formulated as per FDA Regulations.</li> </ul>
	PCW 85	1200±300 cps	140-160	82±2		
LAMINATION WAX (AL-FOIL / GLASSINE)	CH 850 LY	40±10 cps at 100 °C	120-130	75±5	For Butter Packaging	<ul style="list-style-type: none"> <li>- Oil &amp; Water Resistant</li> <li>- Formulated as per FDA Regulations.</li> </ul>
	CH 850 LW	40±10 cps at 100 °C	120-130	75±5		

## • Soap Wrappers



Product	Grade	Viscosity at 150°C	Gluepot Temp. (°C)	Softening Temp. (°C)	Application	Specific Advantages
HOTMELT COATINGS	SWC 25 LH (4)	3000±1000 cps	140-160	80±5	For Inner Coating & Heat Sealing of Soap & Chocolate Wrappers.	<ul style="list-style-type: none"> <li>- Seals at Low GSM at High Speeds.</li> <li>- Stable at Extreme Hot or Cold Environment.</li> </ul>
	SWC 25 LH	1500±500 cps	140-160	80±5		
	SWC 25 FG	1500±300 cps	140-160	80±5	Suitable for Chewing-gum Wrapper	<ul style="list-style-type: none"> <li>- Formulated as per FDA Regulations.</li> </ul>

## CHEMISEAL® & AQUASEAL®

### AQUASEAL - COLD SEAL COATING

- Most suitable for Chocolate Wrapping.
- Completely suitable for Direct Food Contact Packaging.
- Gives instant Sealing on Coated to Coated Surface without any Heat Application.

Product	Grade	Viscosity, at 25°C	Solids %	pH	Application	Specific Advantages
COLD SEAL COATING FOR CHOCOLATE WRAPPERS	CSC 4311	1500±200 cps	39±1	8.5±1	Coating on Inner Surface of the Plain/Metalized PET, BOPP, Paper or Board.	<ul style="list-style-type: none"> <li>- Seals with Pressure Application only.</li> <li>- Instant Sealing on Coated to Coated Surface.</li> <li>- Can be used for Board to Board bonding in Blister Packaging.</li> <li>- Formulated as per FDA Regulations.</li> </ul>



## CHEMIBIND®

### ACRYLIC CO-POLYMER RESIN POWDER

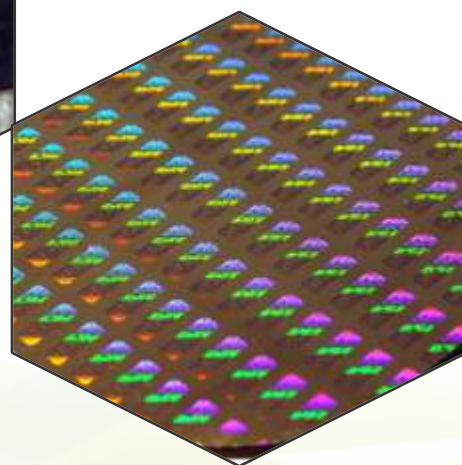
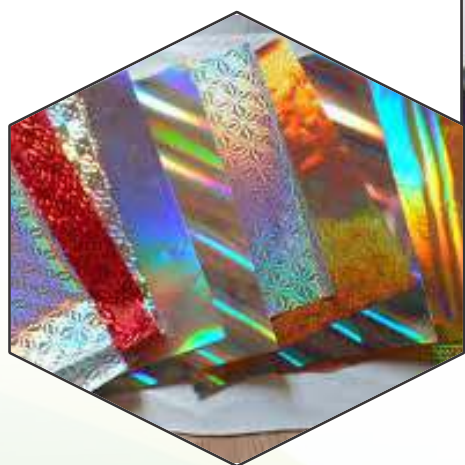
Product	Grade	Bulk Density (secs)	Mixing Ratio	Viscosity (25% Solids)	Gloss	Application
ACRYLIC CO-POLYMER RESIN POWDER	CR 40 TC	0.45±0.05	25 PARTS RESIN WITH 75 PARTS EA	22±5 secs	45-65%	Topcoat for all types of Printed Paper for Gravure Coating Machines.
	CR 40 IB	0.45±0.05	2-3% IN VINYL INKS MANUFACTURING	---	---	Used as Ink Binder in Gravure Inks and can replace Degalan P24 which is a binder.
	CR 40 HS	0.45±0.05	35 PARTS RESIN WITH 65 PARTS EA	100±10 secs	---	As Heat Seal Coating of Al Foil to Al Foil Sealing.
	CR 40 (4)	0.45±0.05	25 PARTS RESIN WITH 75 PARTS EA	45±5 secs	---	As Release Lacquer.



**HOTMELT & WATER BASED PRESSURE SENSITIVE ADHESIVES**

**Chemline** manufactures wide range of Pressure Sensitive Adhesives suitable for application in BOPP Packaging Tapes, Holographic Labels, Stickers, Label stocks, Protective Films, Envelope Flaps and other Allied uses.

Product	Grade	Viscosity, at 25 °C	pH	Solids%	Application	Specific Advantages
HOTMELT PRESSURE SENSITIVE ADHESIVES	CH 9028 L2F	15,000±3000 cps	-	-	Suitable for Label Stocks, Holograms	Quick Bond formation Minimal Odor
	CH 9028 L3F	8,000±2000 cps	-	-		
WATER BASED PRESSURE SENSITIVE ADHESIVES	PST 52	16±2 secs	7.0±0.5	52±1	Suitable for Self Adhesive BOPP Tape & Holographic Labels.	Good Tack & Non Transferable
	PST 55 (HT) 3	28±2 secs	7.0±0.5	57±2		
	PS 5520	1300±200 cps	6.0±1.0	52±1	Suitable for Stickers & Label Stock.	
	PS 5570	7500±500 cps	6.0±1.0	52±1		
PROTECTIVE FILM	PST 55 (PF)	17±2 secs	8.0±0.5	51±2	Used on LDPE Films for Acrylic, Glass & other surfaces to protect from Scratch, Cutting, Abrasion etc.	Non-transferable, clear adhesive coating & clean removability.



★ Some of Pictures used here are for representation only

**CHEMIFLEX®**

## LAMINATION ADHESIVES



Chemline manufactures full range of Solvent free & Solvent Based Polyurethane Adhesives under the brand name **CHEMIFLEX**, which are successfully running on machines like Nordmeccanica, Expert, Pelican, Futura, Kohli, Narendra etc.

## SOLVENT FREE PU LAMINATION ADHESIVE

- **Bi-Component Adhesive**



Product	Grade	Viscosity, cps	Solids %	Application	Specific Advantages
SOLVENT FREE POLYURETHANE LAMINATION ADHESIVES	CPU 100 BC (NCO)	2000±500, 40 °C	100%	<ul style="list-style-type: none"><li>- Solvent Free Two Component PU Adhesive System.</li><li>- Used in the Ratio of 100:60 Parts on High Speed Machines like Nordmeccanica.</li><li>- For making laminates of films like Al Foil, PET, BOPP, LDPE, CPP, MET BOPP, MET PET, MET CPP etc.</li></ul>	<ul style="list-style-type: none"><li>- Best suited for Food Packaging.</li><li>- Gives Good Bond Strength with Speckling Free Result.</li><li>- Good Heat Sealing &amp; Resistance Properties.</li><li>- Formulated as per FDA Regulations.</li><li>- Suitable for lamination of light color substrates with MET-PET.</li></ul>
	CPU 100 BC (OH)	1000±200, 25 °C	100%		

• **Mono-Component Adhesive**



Mono-Component Applicator



Bi-Component Applicator

Product	Grade	Viscosity, cps	Solids %	Application	Specific Advantages
MONO-COMPONENT POLYURETHANE LAMINATION ADHESIVES	CPU 100 M	1200 $\pm$ 400, 100 °C	100%	- Solvent Free Single Component PU Adhesive System. - Lamination of Paper To Al Foil / Various Films like PET, MET PET, CPP etc.	- Cures with Presence of Moisture within 24-40 hrs. - Suitable for Lamination at High Speeds

**SOLVENT BASED PU LAMINATION ADHESIVE**



**POLYURETHANE SOLVENT BASED LAMINATION ADHESIVES**

Applications	Grade	Specific Advantages	Viscosity @ 25 °C	Solids %	Application
SOLVENT BASE POLYURETHANE LAMINATION ADHESIVE	CPU-60(NCO)		600 $\pm$ 200 cps	60 $\pm$ 1	Retort Grade
	CPU-50(OH)		15 $\pm$ 2 sec	50 $\pm$ 1	Mixing Ratio - 100:4
	CPU-66	- Suitable for hot filling applications like Ketchups & Aggressive Products like shampoo, spices etc.	6000 $\pm$ 1000 cps	66 $\pm$ 1	Medium to High Performance
	HD-50	- Used in General purpose application at low coating weights with higher mileage.	16 $\pm$ 2 sec	50 $\pm$ 1	Mixing Ratio - 100:15
	CPU-80M	- Best Suited for food packaging.	2000 $\pm$ 200 cps	80 $\pm$ 1	General to Medium Performance
	HD-75	- Formulated As per FDA Regulations	1000 $\pm$ 200 cps	75 $\pm$ 2	Mixing Ratio - 100:15 for HDPE/LDPE films, 100:12 for Metalize films
	CPU-80		5000 $\pm$ 1000 cps	80 $\pm$ 2	General Performance
	HD-75		1000 $\pm$ 200 cps	75 $\pm$ 2	Mixing Ratio - 100:15 for HDPE/LDPE films, 100:12 for Metalize films





## GLOBAL PRESENCE

**Chemline India Ltd.** F-1, Sarda Chamber-1, Central Market, Prashant Vihar, Rohini,  
Delhi-110085 (INDIA) Ph : +91-11-27555991-99, Fax : +91-11-27555992

**Enquiry from India For Bottle Labelling :** [sales@chemlineglobal.com](mailto:sales@chemlineglobal.com)

**For Graphic Arts Products :** [sales2@chemlineglobal.com](mailto:sales2@chemlineglobal.com)

**For Flexible Packaging Products :** [sales3@chemlineglobal.com](mailto:sales3@chemlineglobal.com)

**For Speciality Hotmelts :** [hmsales@chemlineglobal.com](mailto:hmsales@chemlineglobal.com)

**Enquiry from Countries other than India :** [exports@chemlineglobal.com](mailto:exports@chemlineglobal.com)

**Other Miscellaneous Mails :** [info@chemlineglobal.com](mailto:info@chemlineglobal.com)



Progress Through Innovation



**LABELING ADHESIVES  
HOTMELT CARTON CLOSING  
BOPP TAPES**





**IN TOUCH  
WITH YOUR  
NEEDS  
ALWAYS AND  
EVERYWHERE**





From a modest and humble beginning in 1990, CHEMLINE has emerged as one of the India's No. 1 manufacturer and exporter of a wide range of Industrial Adhesives & Coatings. Company has already completed successful 28 years of its existence.

CHEMLINE INDIA LTD. the flagship company of CHEMLINE GROUP, manufactures a complete range of world class Adhesives and Coatings for Paper-Printing, Packaging and Converting Industry, Flexible Packaging Industry, Hygiene Industry, Labeling Adhesives for Breweries, Distilleries and Pharma Industries & specialized Hot Melt Adhesives for vast range of applications. Today Chemline offers over **500+** products in area of Adhesives & Coatings for various industrial applications.

Starting with its marketing activity in India, CHEMLINE has expanded into more than 30 countries including Europe & America's and now has a wide network of offices, distributors and agents all over the globe.

CHEMLINE possesses a very modern and green manufacturing installation with 'State of the Art' Facilities and Equipments for each range of products. The emphasis of the company is on 'Innovation', and therefore the core of the company is its Research and Development wing.

# BONDING TOGETHER





**Dr. Ravindra Goel**

Chairman & Managing Director

A Technocrat and a Scientist with Doctorate in Polymer Technology, I myself lead the R&D wing of the company. I have a zeal for research work and as such am deeply involved in the Development Activity. CHEMLINE is managed by more than 200 motivated and professional technocrats and managers with long experiences in their fields of specialization. Many more are there in its marketing network of distributors and agents to provide services to its customers across the world.



# ROOTS OF CHEMLINE IS IN ITS RESEARCH & DEVELOPMENT.



It has a fully equipped modern laboratories staffed by dedicated, highly qualified and experienced scientists. This has been the major reason for development of such a wide range of products.

Equally advanced and separate laboratories are there for Quality Control, Product Applications and their Testing. Company possesses a vast piece of land near Delhi with separate manufacturing units for each product manufactured by the company. There are enough manufacturing capacities in each segment of its product range to cater to global requirements.

Certified as ISO 9001:2015, 14001:2015 & 45001:2018 Company, quality is of utmost importance to CHEMLINE. Our strength lies in providing quality and prompt service to the customers and in doing so, no efforts are spared. The motto of CHEMLINE is 'Progress through Innovation'. We develop new products, maintain its quality and are always eager to upgrade them. We also provide customised products to suit the need of the customers. We work very closely with them, providing strong after sales technical support. Customer's satisfaction is held above everything else.



## RESEARCH & DEVELOPMENT

Roots of CHEMLINE is in its Research & Development.  
CHEMLINE works with:  
Strong emphasis on R&D.  
Fully equipped laboratories & pilot plants.  
Continuous updations of quality.  
Immediate action to develop customer specific products.  
New product development through interaction with customers.  
Keep ourselves updated with new technologies.

## MARKETING & EXPORT ACTIVITIES

Owing to superior quality & competitive price, CHEMLINE exports its products to about 30 countries. The products have been widely accepted and regularly exported to a number of corporate customer in:

Europe  
The Middle East  
Latin America  
South East Asia  
Countries of Africa  
CIS

CHEMLINE products are supplied world-wide either directly to the customers or through our network of Agents and Distributors. Apart from above countries, CHEMLINE has marketing support offices in major metros in India to work closely with customers.

## QUALITY ASSURANCE

CHEMLINE takes pride in focusing on R&D and manufacturing processes to provide top quality products and services to its customers. The production involves state-of-art plants with hi-tech systems. The quality is controlled and monitored through in-house lab facilities and sophisticated testing equipments which are manned by highly qualified scientists and professionals. CHEMLINE regularly audits and improves its systems and quality parameters to ensure consistency, keep pace with the new technology and upgrade standards required by the market. In addition, CHEMLINE lays special emphasis on environment, health & safety standards.

# GLOBAL PRESENCE





# Labelling Adhesives For **BREWERIES**





# CHEMIGUM<sup>®</sup>

## CHEMLINE is a market leader for supply of Labelling Adhesives in Beer Industry

Chemline has a series of water-base adhesives designed for glass bottle labelling, which exhibits excellent machinability on high speed rotary labellers and superior bonding strength to all types of glass bottles in brewing industry.

### Product key features:

- High Tack
- Good Mileage
- Compatible on high / slow speed machines.
- Suitable to all types of climatic conditions.

Following are the General Purpose Grades for Beer Industry:

Product	Grade	Viscosity cps, at 25°C	pH	Solids %	Application	Specific Advantages
ICE WATER RESISTANT LABELLING ADHESIVES FOR BREWERIES	9060 IWR (3H)	95,000 ± 30,000	5.0 ± 1.0	30±2	Labelling & Foiling of Beer Bottles on High Speed Labelling m/c's like Kronen, KHS etc.	Suitable for upto 65,000 BPH, fast drying, more mileage & approx. 4 days of IWR after 24 & 48 hrs of labelling.
	9060 IWR (9H)	95,000 ± 30,000	5.0 ± 1.0	30±2		Suitable for upto 65,000 BPH, fast drying, more mileage & approx. 7 days of IWR after 48 hrs of labelling.
	9060 IWR (18H)	95,000 ± 30,000	5.0 ± 1.0	30 ±2		Suitable for upto 65,000 BPH, fast drying, more mileage & approx. 3 days of IWR after 48 hrs of labelling.
	UB 7020 HS	75,000 ± 6000	5.0 ± 7.0	21±2	Labelling & Foiling of Beer Bottles on High Speed Labelling m/c's like Kronen, KHS etc. Ice Water Resistance upto 3-7 days after 48 hrs of curing on metallized labels.	Product with faster drying and suitable for 40,000 BPH m/c's or more with better coverage.
	6510 IWR H/UB 7020 H	1,00,000 ± 10,000	5.0 ± 7.0	22.5±1		Suitable for 25,000 BPH m/c's
	6510 IWR C	80,000 ± 10,000	5.0 ± 7.0	22±1		Product possesses High Wet Tack & suitable on 25,000 BPH m/c's



## Glass/Pet Bottle Labelling For Distilleries Food & Pharma







## Glass/Pet Bottle Labelling For Distilleries Food & Pharma



## CHEMLINE was first to manufacture Transparent Adhesive in India. Ideal for Moderate to High Speed Machines.

- Chemline is a leader in adhesives for Distilleries, Pharmaceuticals & Food Industries.
- CHEMIGUM is highly versatile on coated and non-coated labels at a wide range of operating speeds.
- Transparent adhesive offers high Wet tack, faster setting time, above all exhibits consistent clean machining, eliminates label flagging, wrinkle formation and air bubble formation.
- Readily available in different viscosity ranges and best suited for automatic, semi-automatic and manual gumming machines.

Following are the General Purpose Grades of Labelling for Glass Bottle Distilleries:

Product	Grade	Viscosity cps, at 25°C	pH	Solids %	Application	Specific Advantages
COLD LABELLING ADHESIVES FOR DISTILLERY AND PROCESSED FOOD INDUSTRY	TG 9000	1,20,000±20,000	6.0±1	22±2	For High & Slow Speed Pumps type Automatic machines.	Water White Transparent Adhesives. Suitable for High Humid & Dry Conditions.
	TG 2210 F(12)	1,50,000±10,000	6.0±1	22±2		Water white transparent viscous liquid. High Wet Tack. Excellent bonding.
	TG 2210 F	1,50,000±10,000	6.0±1	24±2		Water White Transparent Adhesives. Suitable for High Humid & Dry Conditions.
	TG 1550 F	11,500±500	6.5±0.5	6±1	For Manual / Hand Gumming M/c's	Water White Transparent Adhesives. Suitable for High Humid & Dry Conditions.
	4560	1,00,000±10,000	6.0±1	22.5±1	For High & Slow Speed Pump Type Automatic M/c's	Product possess Condensation Water Resistance after Curing for 48 hrs.

Product	Grade	Viscosity cps, at 25°C	pH	Solids %	Application	Specific Advantages
COLD LABELLING ADHESIVE FOR HDPE/ PET BOTTLES	PL 100 X 3	1,40,000±20,000	6.0±1.0	49±2	Suitable for Paper to PET Bottles on Pump/Pot Type Machines. Products are Stain Free & Fast Drying.	Used for Paper to PET / HDPE Bottle Labelling on Auto, Semi-Auto & Gumming M/C's.
	PL 100 X 6	1,55,000±10,000	6.0±1.0	50±1	For HDPE , PET Bottles on Pump Type M/C's	
	PL 100 T	6000±1000	6.0±1.0	35±5		
	PL 50	12000±1000	6.0±1.0	21±5	For Manual / Gumming M/C's	

# Hotmelt Adhesives For Pet Bottle Labelling





# CHEMIGUM<sup>®</sup>

## CHEMLINE manufacture Hotmelt adhesives for pressure sensitive applications suitable for Pet to High Speed Machines for Pet Bottle Labelling.

Chemline Hot Melt adhesives for bottle labelling has low viscosity which can be operated at low temperature and reduce label deformation. It has a permanent tack that can bond label with less volume for various kind of plastic films and bottles such as PP, PET, HPPE. We also have adhesives for straw attachment on tetrapack. It gives bonding to polyester to paper board.

### Product key features:

- Strong adhesion in Hot & Cold environment.
- Transparent
- Good Machine Performance
- Excellent Flexibility

Product	Grade	Appearance	Viscosity cps, at 150°C	Gluepot Temp. (°C)	Softening Pt. (°C)	Application	Specific Advantages
HOT MELT ADHESIVES FOR PET BOTTLE LABELLING FOR BEVERAGE INDUSTRY	CH 9026 THS	Transparent water white Pillow	1000±200	140-160	80±2	High Dry Tack	High Speed upto 600 BPM or more.
	CH 9026 WMS	Transparent Pillow	800±200	140-160	70±2	Labelling of Pet Bottles for Beverage and Mineral Water Industry.	Suitable for low Speed M/c's upto 200 bpm
	CH 9026 YMS	Transparent Light Yellow Pillow	700±200	140-160	70±2		Suitable for high-speed m/c's upto 600 bpm or more. It has good bonding with PP, BOPP, PE Lables to PET Bottles for Beverages and Mineral water



# Hotmelt Adhesives For Case, Corrugated, Master Carton Sealing

## Hotmelt Adhesives: Types & Physical Form

Hot Melt  
Adhesives

Ethyl Vinyl Acetate



Metallocene



Polyolefins



## Carton flap sealing

Chemiline offers hotmelt adhesive for sealing of corrugated boxes, Chemiline specially innovates EVA & metallocene based products for high speed packaging line.

- Chemline Adhesives for case and carton sealing possesses high tack, fast setting time & low viscosity for efficient performance.
- No charring or burning while using adhesive in tanks.
- Consistent quality with higher mileage and reduced downtime on every application at the end of the line packaging.
- Specially Innovative Metallocene based product for high speed packaging line which offers substantial saving and higher productivity.

Product key features:

- High Adhesion
- Fast Setting Time
- Strong Bonding of Packages to stay closed throughout the supply chain.
- Good Machine Performance
- Lower energy consumption
- Reliable operations
- Suitable for various hotmelt dispensing machine like Robatech, Nordson, Valco Melton etc.

BRAND - QUIKLOCK®				Technical Specifications			
Applications	Grade	Characteristics	Appearance	Viscosity @ 150 °C	Setting Time	Glue Pot Temperature	Softening Point
Case & Carton Sealing for Food Products, Cable, Ceramics, Tissue Beverages & Breweries. Tray Packing.	CH 90 F12 (EVA Based) (Non-Laminated Substrates)	Superior bonding between paper to paper/ board. No string formation during usage.	Transparent Light Yellow Granules	1000 ± 200 cps	< 1 Sec.	100 - 110 °C	92 ± 5 °C
	CH-125 F12 (EVA Based) (Non-Laminated Substrates)		Light Yellow Granules	1000 ± 200 cps	< 1 Sec.	130 - 150 °C	110 ± 5 °C
	CH-135 FMW (Metallocene based Non-Laminated Substrates)	It is non-charring after prolonged periods at 140°C. Less energy consumption due to low temperature. Excellent thermal stability. Higher mileage. Reliable operations.	Transparent Light Yellow Granules	1600 ± 500 cps	< 1 Sec.	150 - 170 °C	117 ± 5 °C
	CH-135 WFM(308) (Metallocene Based) All kinds of laminated / non-laminated substrates	<b>Suitable for Laminated, UV Coated &amp; MET-PET Cartons. Performance across all climatic conditions (upto -30 °C) / laminated surfaces</b>	Snow White Granules	2000 ± 500 cps	1-2 Sec.	160 - 180 °C	130 ± 5 °C
Food Products, Pharma, Tissue Carton Sealing. Ice Cream Carton Flap & Side Sealing.	CH-135 (YBL) Rubber based (Laminated, METPET & LD Substrates)	Suitable for laminated, UV coated / MET-PET Cartons.	Light Yellow Pillows	1700 ± 500 cps	4-5 Sec.	130 - 150 °C	82 ± 5 °C
	CH-205 IC	Superior bond strength in deep freeze upto -30°C. Higher Mileage.	Snow White Pillows	1200 ± 500 cps	3-4 Sec.	140 - 150 °C	107 ± 5 °C
Tetra pack Straw Bonding	CH-190 SB (EVA Based)	Superior bonding between paper to paper rope.	Snow White Granules	2000 ± 500 cps	3-4 Sec.	140 - 160 °C	97 ± 5 °C
Glue Stick (250 mm length x 10 mm Dia.)		Paper board cartons, fiber board boxes, crafts in home, coating label stock material for self adhesive labels.	White / Yellow Sticks	16500 - 22500 cps	3-4 Sec.	160 - 190 °C	86 ± 5 °C



## Wet Glue Labels and Self Adhesive Labels

With an extensive experience of 28 years of serving Industries like Breweries, Distilleries, Food, Pharma and Beverage with the supplies of Labelling Adhesive for high speed Labelling Machines, Chemline has decided to venture into **PRINTING OF LABELS**.

Selling of Printed Labels is Synergistic to our present activities of selling adhesives with 80% of India's Market Share.

With this synergy in mind, Chemline has set-up the most modern, Fully Servo, Automatic, Narrow Web Printing Facilities with all the downstream facilities for Label Slitting, Inspection, Ramp Punching etc.



**Narrow Web Printing Machine**

Apart from this there is highly Specialized Prepress Section for designing of Labels.

## Following are the product range of Chemline in Printed Labels :

### Wet Strength Labels for Breweries :



Imported Wet Strength Plane and Metalized Paper are being used in printing of Breweries Labels, Care is taken that the Brewery Label are printed only with water base inks for recyclable bottles.

Good Quality Wet Strength Paper ensures that fine fibers of paper do not impair the efficiency of washing machine / quality of bottle cleaning.

### Wet Glue Labels for Distilleries / Pharma / Food Industries :

Printed on Quality Paper as per the customer specification with excellent quality.

This will timely overcome the challenge of label dropping during labeling process.



### Self Adhesive Labels (Paper & Film)

Creative Decoration of Label with leafing, Hot Foiling, Varnishing, Screen Effects, Texture Effect etc



## BOPP Wrap Around Labels

Flexo Printed BOPP Labels & Wrap Around Labels with modern age decoration having dot registration between front & back printing.



Apart from the above printing facility, Chemline has set production for Self Adhesive Paper, Films and Pressure Sensitive Adhesive. With the back built integration, we are in a great advantageous position compared of our competition. This economy of back-ward integration can be extended to our valued customer.



# Carton Flap Sealing **BOPP Tapes**



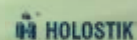
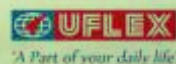
Quiktaek Brand BOPP (Bi- Axially Oriented Poly Propylene) tape are made with in-house developed high tack adhesive system, which provides guaranteed pilfer proof packaging in all types of weather condition.

Product key features:

- High Tack
- High Co-hesion
- High Bonding
- High Tensile Strength
- Long Life
- Full Paper Tear

Product	Length(Mtrs)	Width(mm)	Color	Thickness (Microns)	Specific Advantages
BOPP TAPE FOR CARTONS FLAP SEALING	65, 100, 130, 250 & 650	48, 60 & 72	Transparent, Brown Single & Double Color Printed	35 ± 1	Superb tack & adhesion to surface. Pilfer proof & can with stand extremes of temperature & pressure. Complete protection to packages during transit time handling.
				37 ± 1	
				40 ± 1	
				44 ± 1	
				49 ± 1	
				54 ± 1	

# OUR VALUED CUSTOMERS







## Chemline India Ltd.

F-1, Sarda Chamber-1, Central Market, Prashant Vihar, Rohini,

Delhi-110085 (INDIA) Ph : +91-11-27555991 - 99

Fax : +91-11-27555992

Website : [www.chemlineglobal.com](http://www.chemlineglobal.com)

Enquiry from India For Bottle Labelling :

[sales@chemlineglobal.com](mailto:sales@chemlineglobal.com)

For Graphic Arts Products :

[sales2@chemlineglobal.com](mailto:sales2@chemlineglobal.com)

For Flexible Packaging Products :

[sales3@chemlineglobal.com](mailto:sales3@chemlineglobal.com)

For Speciality Hotmelts :

[hmsales@chemlineglobal.com](mailto:hmsales@chemlineglobal.com)

Enquiry from Countries other than India :

[exports@chemlineglobal.com](mailto:exports@chemlineglobal.com)

Other Miscellaneous Mails :

[info@chemlineglobal.com](mailto:info@chemlineglobal.com)



## Bonding Together

Where Your **Adhesives and Coatings** Requirements Are Always Met



## LAMINATION & COLD GLUES FOR PAPER PACKAGING & CONVERTING

### LAMINATION ADHESIVES

- Water Based Dry Lamination Adhesive
- Water Based Wet Lamination Adhesive
- Polyurethane Based Mono Component Lamination Adhesive

### WATER BASED COLD GLUES

- Carton Flap And Lock Bottom Sealing Adhesive
- Paper To Paper Or Board Pasting Adhesive
- Flute Lamination Adhesive
- Liner Pasting Adhesive
- Books & Box Making Adhesive
- Corrugated Boxes - Side Sealing



# In Touch With your **Needs** ALWAYS & EVERYWHERE

From a modest and humble beginning in 1990, **CHEMLINE** has emerged as one of the India's No. 1 manufacturer and exporter of a wide range of Industrial Adhesives & Coatings. Company has already completed successful 26 years of its existence.

**CHEMLINE INDIA LTD.** the flagship company of **CHEMLINE GROUP**, manufactures a complete range of world class Adhesives and Coatings for Paper-Printing, Packaging and Converting Industry, Flexible Packaging Industry, Hygiene Industry, Labeling Adhesives for Breweries, Distilleries and Pharma Industries & specialized Hot Melt Adhesives for vast range of applications.

Starting with its marketing activity in India, **CHEMLINE** has expanded into more than 30 countries including Europe & America's and now has a wide network of offices, distributors and agents all over the globe.

**CHEMLINE** possesses a very modern and green manufacturing installation with 'State of the Art' Facilities and Equipments for each range of products. The emphasis of the company is on 'Innovation', and therefore the core of the company is its Research and Development wing. It has a fully equipped modern laboratories staffed by dedicated, highly qualified and experienced scientists.

This has been the major reason for development of such a wide range of products.

Equally advanced and separate laboratories are there for Quality Control, Product Applications and their Testing. Company possesses a vast piece of land near Delhi with separate manufacturing units for each product manufactured by the company. There are enough manufacturing capacities in each segment of its product range to cater to global requirements.

Certified as ISO 9001:2015, 14001:2015 & 45001:2018 Company, quality is of utmost importance to **CHEMLINE**. Our strength lies in providing quality and prompt service to the customers and in doing so, no efforts are spared. The motto of **CHEMLINE** is 'Progress through Innovation'. We develop new products, maintain its quality and are always eager to upgrade them. We also provide customised products to suit the need of the customers. We work very closely with them, providing strong after sales technical support. Customer's satisfaction is held above everything else.



Dr. Ravindra Nath Goel

**A Technocrat and a Scientist with Doctorate in Polymer Technology, I myself lead the R&D wing of the company. I have a zeal for research work and as such am deeply involved in the Development Activity. CHEMLINE is managed by more than 200 motivated and professional technocrats and managers with long experiences in their fields of specialization. Many more are there in its marketing network of distributors and agents to provide services to its customers across the world.**



**PROGRESSTHROUGH INNOVATION**

**Dr. Ravindra Nath Goel**  
(Chairman & Managing Director)  
**CHEMLINE GROUP**



# OUR STRENGTHS...

## RESEARCH & DEVELOPMENT

Roots of **CHEMLINE** is in its Research & Development.

**CHEMLINE** works with:

- Strong emphasis on R&D.
- Fully equipped laboratories & pilot plants.
- Continuous updations of quality.
- Immediate action to develop customer specific products.
- New product development through interaction with customers.
- Keep ourselves updated with new technologies.



## MARKETING & EXPORT ACTIVITIES

Owing to superior quality & competitive price, **CHEMLINE** exports its products to about 30 countries. The products have been widely accepted and regularly exported to a number of corporate customer in:

- Europe
- The Middle East
- Latin America
- South East Asia
- Countries of Africa
- CIS

**CHEMLINE** products are supplied world-wide either directly to the customers or through our network of Agents and Distributors. Apart from above countries, **CHEMLINE** has marketing support offices in major metros in India to work closely with customers.



## QUALITY ASSURANCE

**CHEMLINE** takes pride in focusing on R&D and manufacturing processes to provide top quality products and services to its customers. The production involves state-of-art plants with hi-tech systems. The quality is controlled and monitored through in-house lab facilities and sophisticated testing equipments which are manned by highly qualified scientists and professionals. **CHEMLINE** regularly audits and improves its systems and quality parameters to ensure consistency, keep pace with the new technology and upgrade standards required by the market. In addition, **CHEMLINE** lays special emphasis on environment, health & safety standards.



**PAPER TO FILM LAMINATION, WATER BASED DRY LAMINATION ADHESIVES**

**CHEMLINE** is a global leader in manufacturing Chemicryl Brand Dry Lamination Adhesive having hold over 70% Indian Market and also having export to many countries in Europe, Middle East, Latin America, & South East Asia.

**CHEMICRYL** Dry Lamination Adhesive performs well on all kind of Dry lamination sheet fed machine like Wen Chyuan, Yii Lee, Paper Plast, Billhofer, Zhonke etc.

Excellent performance over all kind of lamination film, i.e. - PET, MET PET, BOPP, MET BOPP, BOPP MATT, (PEARL Finish), Holographic Films etc.

Product	Grade	Viscosity, at 25 °C	pH	Solids%	Application	Specific Advantages
DRY LAMINATION ADHESIVES FOR WEN CHYUAN YILEE, ZHONKE M/C's & FOR GRAVURE/ DOCTOR BLADE COATING.	DLW 5202 (20X)	17+2 secs	7.5+1.0	51+1	All Acrylic Type Products for Lamination of Films like PET, PVC, BOPP, MPET to Paper / Duplex Board at High Speed of upto 80 mtr /min.	Immediate Curing on Automatic Lamination Machines.
	DLW 5002 (20X)	17+2 secs	7.5+1.0	49+1		
	DLW 5202 (18X)	17+2 secs	7.5+0.5	51+1		
	DLW 5002 (18X)	17+2 secs	7.5+0.5	49+1		
	DLW 4002 (8)R	15+2 secs	8.0+0.5	41+1	Especially for Lamination of MET PET/Holographic Film.	
	DLW 5202 (9X)R	17+2	7.5+1.0	51+1	All Acrylic Type Products for Lamination of Films like PET, PVC, BOPP, MPET to Paper / Duplex Board at High Speed of upto 80 mtr /min.	Good Peel Strength On Met Pet Flim
	DLW 5002 (9X)R	17+2	7.5+1.0	49+1		



Typical Dry Lamination m/c using Water based Adhesives

## WATER BASED PRESSURE SENSITIVE ADHESIVES

Product	Grade	Viscosity, at 25 °C	pH	Solids%	Application	Specific Advantages
WATER BASED PRESSURE SENSITIVE ADHESIVES	PST 60	28±2 secs	7.0±0.5	58±1	Suitable for Self Adhesive BOPP Tape & Holographic Labels.	Good Tack & Non Transferable
	PST 52	16±2 secs	7.0±0.5	52±1		
	PS 5520	1300±200 cps	6.0±1.0	52±1	Suitable for Stickers & Label Stock.	
	PS 5570	7500±500 cps	6.0±1.0	52±1		

## CHEMIFLEX

## PAPER TO FILM LAMINATION, MONO COMPONENT PU BASED

Product	Grade	Viscosity, at 80 °C	Temp	Solids%	Application	Specific Advantages
SOLVENT LESS MONO-COMPONENT POLYURETHANE LAMINATION ADHESIVE (FOR STEINEMANN M/C's)	CPU 100 M (12)	1200±400 cps	80°	100%	Solvent Less Mono Component PU Adhesive Systems. Specially used for Paper/Board to Film & Foil Lamination.	Cures with the Presence of Moisture within 24-48 hrs.
	CPU 100 M (18)	1800±400 cps	100°			



Typical Lamination Machine for using PU Monocomponent



**PAPER TO FILM LAMINATION, WATER BASED WET LAMINATION ADHESIVES**

Product	Grade	Viscosity, at 100 °C	pH	Solids%	Application	Specific Advantages
HIGH QUALITY WET LAMINATION ADHESIVES FOR SEMI - AUTOMATIC M/C's.	CL 9	2500±500 cps	5.0±1.0	54±1	Especially for Lamination of PET Film apart from BOPP & PVC, MPET with Paper or Duplex Board, Outstanding Grade for Creasing, Embossing, Guttering & Lamination of Dark Substrates.	Well Suited for Creasing, Embossing, Guttering and Lamination of Dark Substrates.
	FL 6055 B	14000±2000 cps	7.0±0.5	49±1		
	FL 6055 (5X)	14,000±2000 cps	7.0±1.0	46±1		
	HLW 6530	12,000±2000 cps	7.5±0.5	45±1		
	FL 4020 SA	25±5 secs	6.0±1.0	40±2	Lamination of Films like BOPP, PVC to Paper or Duplex Board	
	LM 5022	2750±250 cps	6.0±1.0	50±1		
	LM 4522	2750±250 cps	6.0±1.0	42±1		
ECONOMICAL GRADES FOR WET LAMINATION ADHESIVES FOR BOPP.	LM 3522	2500±500 cps	6.0±1.0	35±1	Lamination of Films like BOPP, PVC to Paper or Duplex Board Curing time upto 12 hours.	
	LM 3022	1500±300 cps	6.0±1.0	30±1		
	LM 2522	900±100 cps	6.0±1.0	27±1		



**WATER BASED COLD GLUES FOR MISCELLANEOUS PACKAGING APPLICATIONS**

Product	Grade	Viscosity, cps, at25°C,	pH	Solids%	Application	Specific Advantages
CARTON SIDE/FLAP SEALING & SHELL PASTING	SS 6010 M 9	15000±2000	7.0±1.0	51±2.0	For Side/Flap Pasting of Mono cartons/ Paper Bags through Wheel Application	Good Bonding Strength in Paper to Laminated & UV Coated Surfaces.
	SS 6010 L 9	1200±300	7.0±1.0	51±2.0	For Side/Flap Pasting of Mono cartons/ Paper Bags through Nozzle Application	
	SS 6010 H	45,000±5000	6.0±1.0	55±2.0	For Side / Flap Pasting of Mono cartons/ Paper bags for Manual Applications.	
	FT 4870	9000±500	5.0±1.0	47±1.0	For Side/Flap Pasting of Mono cartons/ Paper Bags through Wheel Application	Good Bonding for Paper to Paper & Duplex Board
	AC 50 LV	2500±500	5.0±1.0	48±1.0	For Side/Flap Pasting of Mono cartons/ Paper Bags through Nozzle Application	
COLD BOOK BINDING ADHESIVE FOR CASING IN APPLICATION	SS 6010 CI	10,000±1000	5.0±1.0	53±1.0	For Casing in Purpose on Fully Automatic m/c's	Good Bonding with PVC / Laminated cover with Quick Drying Characteristics
COLD BOOK BINDING ADHESIVES	WA 40	37,500±2500	5.0±1.0	40±1.0	For Manual Paper to Board/ Paper to Paper Pasting	Plasticized Products With Good Flexibility & Quick Drying
	BDG 54	40,000±5000	5.0±1.0	50±1.0	For Book Binding, Paper to Paper/Board Binding.	
	AC 45 F	26,000±2000	5.0±1.0	35±1.0		
COLD BINDING ADHESIVES					For Paper / Duplex Board To Paper / Flute / Board On Automatic / Semi-Automatic Machine.	Quick Setting Products. Low moisture % after application.
	AC 22 F	100±10 Secs.	5.0±1.0	22±0.5		
	AC 35 F	1700±300	5.0±1.0	28±2.0		
	AC 45 F (10)	20,000±2000	5.0±1.0	30±2.0		
CARTON LINER PASTING ADHESIVES	LP 5210	1,20,000±5000	5.5±1.0	50±2.0	For Pet Liner Pasting through Cylinder	Odour free with Good Bond at -5°C and 70° C.
	SS 6010 L9	1200±300	7.0±1.0	51±2.0	For Pet Liner Pasting through Nozzle	
WINDOW PATCHING ADHESIVES	SS 6010 M9	15000±2000	7.0±1.0	51±2.0	For Window Patching through Cylinder/Roller Application	Good Bonding with Paper/ Board to PVC, BOPP & PET Films.
WATER BASED/ ADHESIVES FOR BOX MAKING/CASE MAKING M/C'S.	ABM 60	8000±500	5.5±1.0	53±2.0	Suitable for Rigid Box / Hard bound Book Case making on Automatic Machine.	Good bonding strength with Paper to Board / Coated Paper to Board.





## GLOBAL PRESENCE

**Chemline India Ltd.** F-1, Sarda Chamber-1, Central Market, Prashant Vihar, Rohini,  
Delhi-110085 (INDIA) Ph : +91-11-27555999 (6 Lines), Fax : +91-11-27555992

**Enquiry from India For Bottle Labelling :** [sales@chemlineglobal.com](mailto:sales@chemlineglobal.com)

**For Graphic Arts Products :** [sales2@chemlineglobal.com](mailto:sales2@chemlineglobal.com)

**For Flexible Packaging Products :** [sales3@chemlineglobal.com](mailto:sales3@chemlineglobal.com)

**For Speciality Hotmelts :** [hmsales@chemlineglobal.com](mailto:hmsales@chemlineglobal.com)

**Enquiry from Countries other than India :** [exports@chemlineglobal.com](mailto:exports@chemlineglobal.com)

**Other Miscellaneous Mails :** [info@chemlineglobal.com](mailto:info@chemlineglobal.com)

 **chemline**<sup>®</sup>  
adhesives & coatings  
*Since 1990*





# Bonding Together

Where Your **Adhesives and Coatings** Requirements Are Always Met

## OVER PRINT COATINGS



**CHEMLINE** - manufactures a range of **OVER PRINT COATINGS** for Printing & Packaging Industry which can be divided in to following categories:

**UV COATINGS**

**AQUEOUS COATINGS**

**BLISTER COATINGS**

**PRIMER COAT**

**WATER PROOFING COATINGS**

### UV COATINGS

**CHEMLINE** - manufactures a full range of UV COATINGS which are Odour Free, Migration Free, Fast Curing & products especially for Food packaging:

#### HIGH SPEED COATER, DUCT AND SCREEN APPLICATIONS

- High Gloss
- High Gloss & High Scuff
- Full Matt & Silky Matt
- Special Grades for Food Packaging
- Gluable Coatings for Texture Finish/Drippo
- Coating Matt & Gloss)
- Grade for Heat Set Web Offset

## PROGRESS THROUGH INNOVATION

[www.chemlineglobal.com](http://www.chemlineglobal.com)

(An ISO 9001:2008, 14001 & 18001 Certified Company)

## ULTRAGLOSS®

### OVER PRINT UV COATINGS FOR COATER & DUCT APPLICATIONS

Product	Grade	Viscosity, at 25 °C (in cps)	Viscosity, at 25 °C FordCup(B-4) (in secs.)	Rub/Scuff Resistance @ 2 lbs	Gloss at 60 deg.	Application	Specific Advantages
OVER PRINT UV COATINGS FOR ONLINE & OFFLINE APPLICATIONS	UVF 400 L (303)	140±20	40±5	500 w/o Primer 800 with Primer	80-90%	Food Grade Gloss UV Coatings for Coater Application.	Online/Offline Coater & Duct UV Coatings works on Slow and High Speed Printing Machine more than 12,000 SPH
	UVF 400 LHS	140±20	40±5	500 w/o Primer 1000 with Primer	80-90%	High Gloss & High Scuff UV Coating for Coater Application.	
	UVF 400 L	160±20	45±5	300 w/o Primer 800 with Primer	80-90%	High Gloss UV Coatings for Coater Application.	
	UVF 4000 L	4000±200	-	500 w/o Primer, 900 with Primer	85-95%	High Gloss UV Coatings for Duct Application.	
	UVF 400 LM	200±20	70±10	500 w/o Primer	5-10%	Matt finish UV Coating for Coater Application.	
	UVF 400 L (25)	100±20	25 ± 5	300 w/o Primer 800 with Primer	80-90%	High Gloss UV Coating for Narrow web coating.	

## ULTRAGLOSS®

### DRIP OFF / TEXTURE UV COATINGS

Product	Grade	Viscosity, at 25 °C (in cps)	Rub/Scuff Resistance @ 2 lbs	Gloss at 60 deg.	Application	Specific Advantages
OVER PRINT UV COATINGS FOR TEXTURE / DRIP-OFF EFFECT WITH ONLINE/OFFLINE DUCT & COATER APPLICATIONS	UVF 35 HD9	1,50,000±30,000	-	15-20%	Matt Finish UV Texture for Duct Application.	Both for Small and Big Grains Size.
	UVF 35 HD3	50,000±5,000	-	30-40%	Double pass texture for with screen Application.	
	UVF 4000 LGS	4500±500 cps	300 w/o Primer 600 with Primer	90-95%	Gluable UV Coatings for Duct to Duct Texture Effect.	Free of Volatiles with 100% Solids.
	UVF 400 LGS	200±20 cps	300 w/o Primer 800 with Primer	90-95%	Gluable UV Coatings for Duct to Coater Texture Effect.	

**ULTRAGLOSS®**

**OVER PRINT UV COATINGS FOR SCREEN APPLICATIONS**

Product	Grade	Viscosity, at 25 °C (in cps)	Rub/Scuff Resistance @ 2 lbs	Gloss at 60 deg.	Application	Specific Advantages
SPOT UV GLOSS & TEXTURE COATINGS FOR SCREEN APPLICATIONS	UVS 600 PR	600±200 cps	300 w/o Primer 800 with Primer	85-95%	Spot UV Coating for Paper, Board and MET PET / BOPP films through Screen Application.	Low Odour, High Slip, High Gloss, Good Scuff.
	UVS 600 PRL	100±50 cps	300 w/o Primer 800 with Primer	85-95%		
	UVS 900 SPT	1000±100 cps	300 w/o Primer 800 with Primer	80-90%		
	UVS 600 PL(9)	600±100 cps	300 w/o Primer 800 with Primer	85-95%	Spot UV Coating for Plastic Substrate	Translucent Liquid
	UVS 600 PL(6)	600±100 cps	300 w/o Primer 500 with Primer	80-90%	Spot UV Coating for Plastic Substrate	Translucent Liquid

**ULTRAGLOSS®**

**OVER PRINT LED UV COATING**

Product	Grade	Viscosity, at 25 °C (in cps)	Rub/Scuff Resistance @ 2 lbs	Gloss at 60 deg.	Application	Specific Advantages
Over Print LED UV Coating	UVF 400 LED *	800±200 cps	400 w/o Primer	90±5	UV Led Design For Excellent Gloss High Scuff, High Slip, Full/Flat Over Print Coating Of All Types Of Printed Paper & Boards	<ul style="list-style-type: none"> <li>• Pollution Free Non-Hazardous Eco Friendly, Free of Volatile</li> <li>• Reduce Power Consumption</li> <li>• No Ozone Generation</li> </ul>

**AQUAGLOSS® & AQUAMATT®**

**AQUEOUS COATINGS**

- High Gloss General Purpose • High Gloss - High Scuff
- Full Matt • Semi Matt • Online Primer Coats for Wet on Wet Coatings

**AQUAGLOSS OVER PRINT COATINGS® FOR COATER & DUCT APPLICATIONS**

Product	Grade	Viscosity, at 25 °C	pH	Rub/Scuff Resistance @ 2 lbs	Gloss at 60 deg.	Application	Specific Advantages
WATER BASED OVER PRINT COATINGS FOR ONLINE/OFFLINE & DUCT APPLICATIONS	OPV W 45	45±5 secs	7.5±0.5	500±100 rev.	55-70%	High Gloss Over Print Aqueous Coating for Online / Offline Coater.	★ Pollution Free, Non-Hazardous & Eco-Friendly.
	OPV W 45 HS	45±5 secs	7.5±0.5	700±100 rev.	45-70%	Over Print Aqueous Coating for Online / Offline Coater for High Rub Resistance.	★ No Organic Solvent Required as Thinner Diluents for Cleaning of Machines hence Economical.
	OPV W 45 M	45±5 secs	7.5±0.5	500±100 rev.	7.5-12.5%	Over Print Aqueous Matt Coating for Coater Applications.	★ Colorless Coating, No Yellowish tinge on Coated Paper.
	OPV W 45 D	10,000±1000 cps	7.5±0.5	300±100 rev.	45-70%	Over Print Aqueous Coating for Duct Applications.	

\* Wavelength - 395 nm



## AQUASEAL® & CHEMISEAL®

### BLISTER COATINGS

**CHEMLINE** - manufacturers a range of BLISTER COATINGS & can be divided into following categories:

Aqueous and Solvent based Coatings for:

- Paper / Board to PVC • Paper / Board to Pet • Al Foil to Pet

Product	Grade	Viscosity, at 25 °C	pH	Solids%	Application	Specific Advantages
OVER PRINT HEAT SEAL COATINGS FOR BLISTER PACKING	HSOPV (W) WATER BASED	1000-1500 cps	7.5±1.0	40±1.0	Coating for PVC Blister Packaging.	Exhibits Good Gloss & Good Sealing Characteristics with PVC Blisters.
	HSOPV (W) 3	30-35 sec	8±0.5	41±2.0	Coating on the Printing Surface for PET & PVC	
	HSOPV S 40 SOLVENT BASED	100±10 sec	-	35±2.0	Blister Packaging.	

## AQUAGLOSS® & AQUAMATT®

### PRIMER COAT

The range includes:

- Primer for MET PET for UV PRINTING for Web Coating & Sheet Coating
- Primer Coat for UV COATINGS for Online & Offline Coating

Product	Grade	Viscosity, at 25 °C	pH	Solids%	Application	Specific Advantages
PRIMER FOR UV COATINGS	ARC 4201	30 - 35 secs	8.0±0.5	42±2.0	Base Coat for obtaining High Scuff Resistance in UV Coating & Good Gloss for Online/Offline.	Usage of Primer improves Scuff, Gloss & Increases Mileage of UV & also increase gloss.
MET PET PRIMER	MPP 4030	30 - 35 secs	8.0±0.5	41±2.0	Primer Coat for Met-Pet film either in Web form through Gravure Coating or Met-Pet Laminated Paper/Board on Sheet Coatings m/c's.	Usage of Primer improves Bonding of Print with the Metalized Surfaces.

**CHEMLINE** - has developed excellent Aqueous Coatings for Water Proofing of Paper, Board and Fabric etc. It is used for creating moisture barrier properties of substrate surface for packaging application.

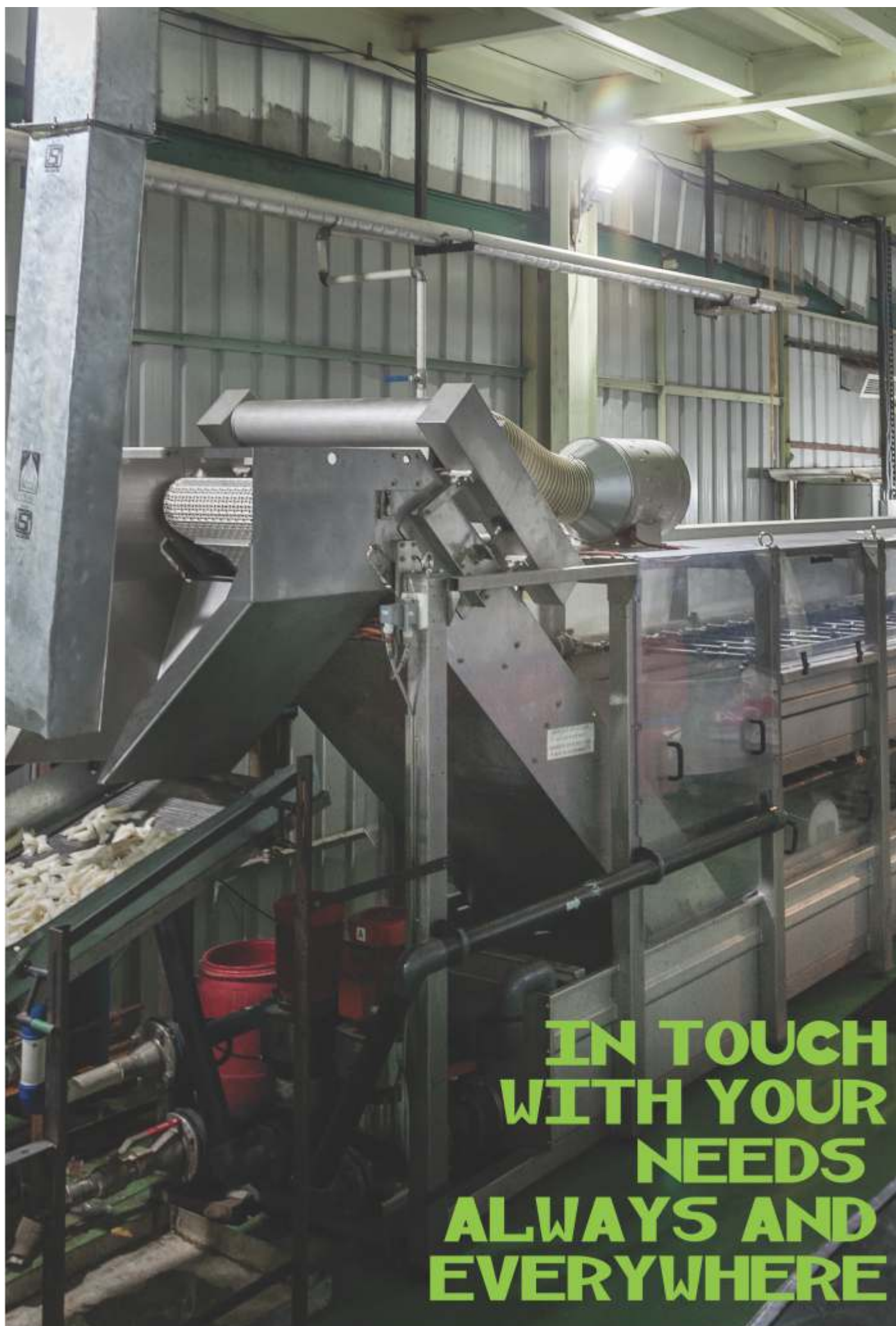
## CHEMICRYL®

### WATER PROOFING COATING

Product	Grade	Viscosity, at 25 °C	pH	Solids%	Application	Specific Advantages
WATER PROOFING COATINGS	WPC 4502	40 ± 10 sec	8.0 ± 0.5	46 ± 1.0	Water proofing coating for packaging substrate ie. Paper/ Board/Fabrics of Cotton, Synthetic etc.	Creates Moisture barrier to protect packed material



**Speciality Hotmelt Adhesives**



**IN TOUCH  
WITH YOUR  
NEEDS  
ALWAYS AND  
EVERYWHERE**



From a modest and humble beginning in 1990, CHEMLINE has emerged as one of the India's No. 1 manufacturer and exporter of a wide range of Industrial Adhesives & Coatings. Company has already completed successful 28 years of its existence.

CHEMLINE INDIA LTD. the flagship company of CHEMLINE GROUP, manufactures a complete range of world class Adhesives and Coatings for Paper-Printing, Packaging and Converting Industry, Flexible Packaging Industry, Hygiene Industry, Labeling Adhesives for Breweries, Distilleries and Pharma Industries & specialized Hotmelt Adhesives for vast range of applications. Today Chemline offers over **500+** products in area of Adhesives & Coatings for various applications.

Starting with its marketing activity in India, CHEMLINE has expanded into more than 30 countries including Europe & America's and now has a wide network of offices, distributors and agents all over the globe.

CHEMLINE possesses a very modern and green manufacturing installation with 'State of the Art' Facilities and Equipments for each range of products. The emphasis of the company is on 'Innovation', and therefore the core of the company is its Research and Development wing.

# BONDING TOGETHER





**Dr. Ravindra Goel**  
Chairman & Managing Director

A Technocrat and a Scientist with Doctorate in Polymer Technology, I myself lead the R&D wing of the company. I have a zeal for research work and as such am deeply involved in the Development Activity. CHEMLINE is managed by more than 200 motivated and professional technocrats and managers with long experiences in their fields of specialization. Many more are there in its marketing network of distributors and agents to provide services to its customers across the world.



# ROOTS OF CHEMLINE IS IN ITS RESEARCH & DEVELOPMENT.



It has a fully equipped modern laboratories staffed by dedicated, highly qualified and experienced scientists. This has been the major reason for development of such a wide range of products.

Equally advanced and separate laboratories are there for Quality Control, Product Applications and their Testing. Company possesses a vast piece of land near Delhi with separate manufacturing units for each product manufactured by the company. There are enough manufacturing capacities in each segment of its product range to cater to global requirements.

Certified as ISO 9001:2015, 14001:2015 & 45001:2018 Company, quality is of utmost importance to CHEMLINE. Our strength lies in providing quality and prompt service to the customers and in doing so, no efforts are spared. The motto of CHEMLINE is 'Progress through Innovation'. We develop new products, maintain its quality and are always eager to upgrade them. We also provide customised products to suit the need of the customers. We work very closely with them, providing strong after sales technical support. Customer's satisfaction is held above everything else.



## RESEARCH & DEVELOPMENT

Roots of CHEMLINE is in its Research & Development.  
CHEMLINE works with:  
Strong emphasis on R&D.  
Fully equipped laboratories & pilot plants.  
Continuous updations of quality.  
Immediate action to develop customer specific products.  
New product development through interaction with customers.  
Keep ourselves updated with new technologies.

## MARKETING & EXPORT ACTIVITIES

Owing to superior quality & competitive price, CHEMLINE exports its products to about 30 countries. The products have been widely accepted and regularly exported to a number of corporate customer in:

- 🌿 Europe
- 🌿 The Middle East
- 🌿 Latin America
- 🌿 South East Asia
- 🌿 Countries of Africa
- 🌿 CIS

## QUALITY ASSURANCE

CHEMLINE takes pride in focusing on R&D and manufacturing processes to provide top quality products and services to its customers. The production involves state-of-art plants with hi-tech systems. The quality is controlled and monitored through in-house lab facilities and sophisticated testing equipments which are managed by highly qualified scientists and professionals. CHEMLINE regularly audits and improves its systems and quality parameters to ensure consistency, keep pace with the new technology and upgrade standards required by the market. In addition, CHEMLINE lays special emphasis on environment, health & safety standards.

# GLOBAL PRESENCE





# **HYGIENE INDUSTRY**

Hotmelt Adhesives for Sanitary  
Napkins, Diapers and Panty Liners



**Construction application**  
**Positioning application**  
**Elastic application**



Chemline provides a range of high performance, Exceptional Comfort and Cost-Effectiveness solutions of hotmelt Adhesives for nonwoven hygiene applications such as Baby Diapers, Feminine Care and Adult Incontinence.

#### Positioning Application

Coated Adhesive



#### Construction Application

Perforated Plastic Layer

Underlying Adhesive Layer



#### Elastic Application & Construction Application

Waist Band

Elastic Construction



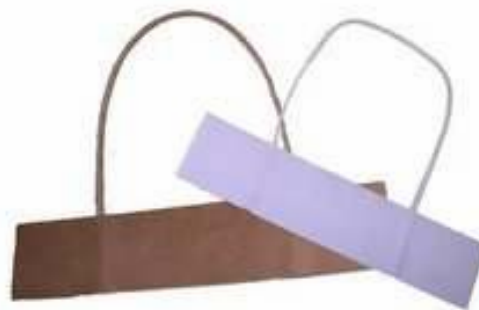
### S A L I E N T F E A T U R E S

- 🌿 Low Odour
- 🌿 Stronger bond Strength
- 🌿 High Softness gives more comfortable fitting
- 🌿 Excellent Thermal Stability
- 🌿 Suitable for spray and slot - die coatings
- 🌿 No reduction in dry tack before and after use

BRAND - QUIKLOCK <sup>®</sup>				Technical Specifications		
Applications	Grade	Characteristics	Appearance	Viscosity @ 150 °C	Glue Pot Temperature	Softening Point
Construction Adhesive	<u>CH-9028 LC3</u>	Suitable for Pressure Sensitive Coating & Spray Application in Diapers & Sanitary Napkins.	Transparent Light Yellow Pillows	2000 ± 500 cps	150 - 170 °C	75 ± 5 °C
	<u>CH-9028 LCW</u>		Transparent Water White Pillows	2500 ± 500 cps	150 - 170 °C	80 ± 5 °C
Positioning Adhesive	<u>CH-9028 LP3</u>		Transparent Light Yellow Pillows	2000 ± 500 cps	150 - 170 °C	75 ± 5 °C
	<u>CH-9028 LPW</u>		Transparent Water White Pillows	4000 ± 500 cps	150 - 170 °C	90 ± 5 °C
Sticking of Elastic Attachment in Diapers	<u>CH-9028 LE1</u>		Transparent Light Yellow Pillows	2000 ± 500 cps	150 - 170 °C	75 ± 5 °C

# PACKAGING INDUSTRY

## Hotmelts for Packaging and Converting Industry



Chemline have hotmelt adhesives for Carton and Case Sealing. Also, we have hotmelts for Packaging and Converting of Ice-Cream and Frozen Foods segments. Constantly endeavouring ourselves in innovation, Chemline especially develops Metallocene based hotmelt. This high performance adhesives has the characteristics of low odour, no charring, no stringing, high strength which can save cost and create better efficiency for the customers.

### S a l i e n t F e a t u r e s

- 🌿 Long / Short open time depends upon the applications
- 🌿 Suitable for various hotmelt machines like Robatech, Valco Melton, Nordson etc.
- 🌿 Good Thermal Stability
- 🌿 Lower Energy Consumption
- 🌿 Low Odour, Creating pleasant environment
- 🌿 Reliable Operations
- 🌿 Higher Mileage

BRAND - QUIKLOCK <sup>®</sup>				Technical Specifications			
Applications	Grade	Characteristics	Appearance	Viscosity @ 150 °C	Setting Time	Glue Pot Temperature	Softening Point
Case & Carton Sealing for Food Products, Cable, Ceramics, Tissue Beverages & Breweries. Tray Packing.	CH 90 F12 (EVA Based) (Non-Laminated Substrates)	Superior bonding between paper to paper/ board. No string formation during usage.	Transparent Light Yellow Granules	1000 ± 200 cps	< 1 Sec.	100 - 110 °C	92 ± 5 °C
	CH-125 F12 (EVA Based) (Non-Laminated Substrates)		Light Yellow Granules	1000 ± 200 cps	< 1 Sec.	130 - 150 °C	110 ± 5 °C
	CH-135 FMW (Metallocene based Non-Laminated Substrates)	It is non-charring after prolonged periods at 140°C. Less energy consumption due to low temperature. Excellent thermal stability. Higher mileage. Reliable operations.	Transparent Light Yellow Granules	1600 ± 500 cps	< 1 Sec.	150 - 170 °C	117 ± 5 °C
	CH-135 WFM(308) (Metallocene Based) All kinds of laminated / non-laminated substrates	<b>Suitable for Laminated, UV Coated &amp; MET-PET Cartons. Performance across all climatic conditions (upto -30 °C) / laminated surfaces</b>	Snow White Granules	2000 ± 500 cps	1-2 Sec.	160 - 180 °C	130 ± 5 °C
Food Products, Pharma, Tissue Carton Sealing. Ice Cream Carton Flap & Side Sealing.	CH-135 (YBL) Rubber based (Laminated, METPET & LD Substrates)	Suitable for laminated, UV coated / MET-PET Cartons.	Light Yellow Pillows	1700 ± 500 cps	4-5 Sec.	130 - 150 °C	82 ± 5 °C
Ice Cream Cone Making & Frozen Foods Carton Sealing	CH-205 IC	Superior bond strength in deep freeze upto -30°C. Higher Mileage.	Snow White Pillows	1200 ± 500 cps	3-4 Sec.	140 - 150 °C	107 ± 5 °C
Paper Bag Handle Pasting	CH-9103 PB (Non-Laminated Substrates)	Superior bonding between paper to paper rope.	Light Yellow Granules	5000 ± 1000 cps	3-4 Sec.	150 - 160 °C	115 ± 5 °C
Glue Stick (250 mm length x 10 mm Dia.)		Paper board cartons, fiber board boxes, crafts in home, coating label stock material for self adhesive labels.	White / Yellow Sticks	16500 - 22500 cps	3-4 Sec.	160 - 190 °C	86 ± 5 °C



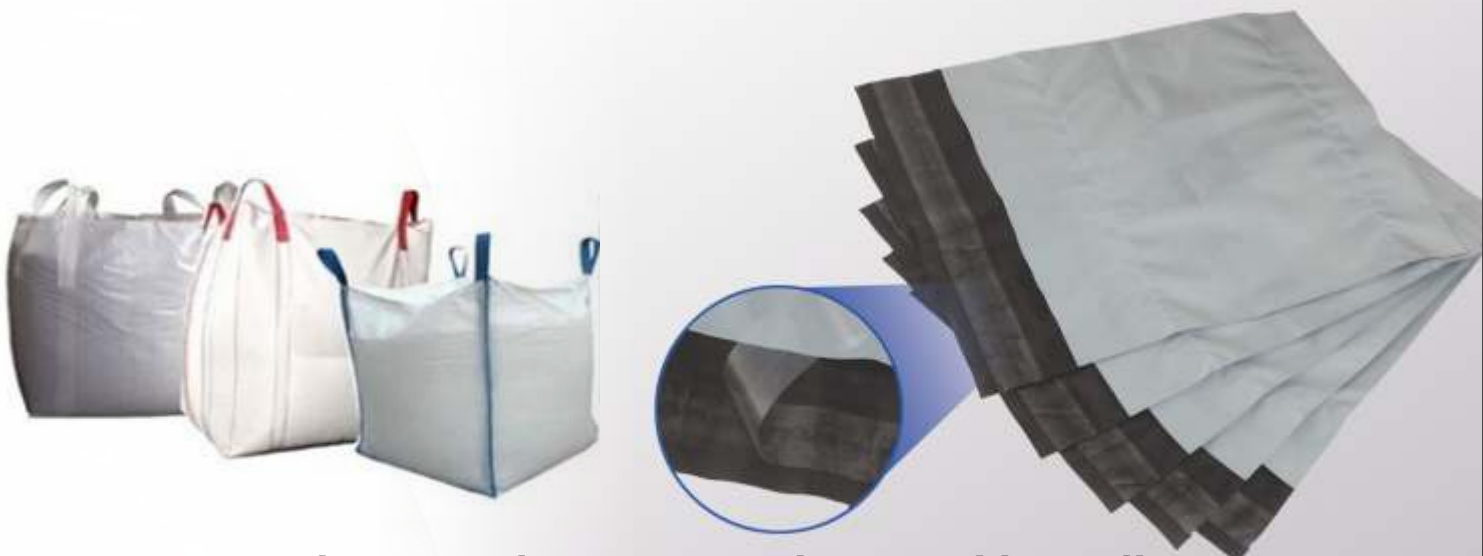
# **HOTMELT PRESSURE SENSITIVE ADHESIVE FOR VARIOUS APPLICATIONS**



## **Medical & Industrial Tapes**



## **Label Stock & Holograms**



## **FIBC Liner Attachment & Courier Bag Side Sealing**

Chemline Pressure Sensitive hotmelt adhesive have wide applications such as Label Stock, Holograms, Courier Bags, Medical Tapes, Industrial Tapes & Liner attachment in Jumbo / FIBC Bags. Chemline have two types of hotmelt glue for Tapes i.e. Tamper Evident (Permanant type) and Peelable Sealing types.

### S a l i e n t F e a t u r e s

- Low Odour
- Stronger bond Strength
- Excellent Thermal Stability
- Suitable for spray and slot - die coatings
- No reduction in dry tack or storage both before and after use

BRAND - QUIKLOCK <sup>®</sup>				Technical Specifications		
Applications	Grade	Characteristics	Appearance	Viscosity @ 150 °C	Glue Pot Temperature	Softening Point
Industrial Tapes & Holograms	<u>CH-9028 L3</u>	It gives fully Tamper Evident even on UV coating in Holograms & also suitable for Alu. Tapes & HDPE Tapes.	Transparent Light Brown Pillows	8000 ± 2000 cps	150 - 170 °C	90 ± 5 °C
Medical & Non-Woven Tapes	<u>CH-9028 L3A</u>	It gives Full Paper Tear. Suitable for coating in Industrial and Surgical Tapes.	Transparent Light Brown Pillows	8000 ± 2000 cps	150 - 170 °C	90 ± 5 °C
Label Stock	<u>CH-9028 L2</u>	Suitable for Hotmelt Coating Application Industrial Tapes. Suitable for coating application in Label Stock. It gives full paper tear.	Transparent Light Brown Pillows	15,000 ± 3000 cps	150 - 160 °C	95 ± 5 °C
	<u>CH-9028 L5</u>		Transparent Light Brown Pillows	30,000 ± 5000 cps	170 - 190 °C	95 ± 5 °C
	<u>CH-9028 L9</u>		Transparent Light Brown Pillows	12,000 ± 2000 cps	150 - 170 °C	90 ± 5 °C
	<u>CH-9028 LW</u>		Creamish Pillows	16,000 ± 3000 cps	150 - 170 °C	90 ± 5 °C
Courier Bag Side Sealing	<u>CH-9028 L3(LT) / CB</u>	Suitable for Side Sealing of coating application in Courier Bag. It gives Fully Tamper Evident.	Transparent Light Brown Pillows	8000 ± 1000 cps	150 - 170 °C	90 ± 5 °C
FIBC Liner Attachment	<u>CH-9028 L</u>	Suitable for Coating Application in Holograms. It gives Fully Tamper Evident.	Transparent Light Brown Pillows	4000 ± 1000 cps	150 - 170 °C	83 ± 5 °C
HMPSA Removable	<u>CH-9028 LRW</u>	Suitable for Removable/Peelable Applications. It can be used as a spray & coating.	Transparent Water White Pillow/Brick	8000 ± 2000 cps	150 - 170 °C	85 ± 5 °C

# BEVERAGE INDUSTRY





Chemline hotmelt adhesives for bottle labelling has low viscosity which can be operated at low temperature and reduce label deformation. It has permanent tack that can bond label with less volume for various kind of plastic films and bottles such as PP, PET, HDPE. Also, we have adhesives for straw attachment on Tetrapack. It gives bonding on Polyester to Paper/Board.

### S a l i e n t F e a t u r e s

- Depend upon customer needs, we will provide Water White, White, Light Yellow adhesives
- Odorless that create good working environment
- Suitable for high speed machine like Krones, KHS, Siddle etc.
- No fibre formation during operation
- No reduction in dry tack or storage both before and after use.

BRAND - QUIKLOCK <sup>®</sup>			Technical Specifications			
Product	Grade	Characterstics	Appearance	Viscosity @ 150 °C	Glue Pot Temperature	Softening Point
PET Bottle Labelling-High Speed-Pot Filling, Contactless Labelling	CH-9026 THS (Machine Speed upto 720 BPM or more)	Strong bonding between PET to PP / PE Label, equally good performance even on wet labels. No fumes and fiber formation during operation. No reduction in dry tack on storage both before and after usage. It gives high coverage (about 15 gms on application area as this is high meltout & dry tack.	Transparent Water White Pillows	1000 ± 200 cps	140 - 160 °C	80 ± 5 °C
	CH-9026 WMS (Machine Speed upto 200 BPM)		Transparent White Pillows	1000 ± 200 cps	140 - 160 °C	70 ± 5 °C
	CH-9026 YMS (Machine Speed upto 200 BPM)		Light Yellow Pillows	800 ± 200 cps	140 - 160 °C	70 ± 5 °C
Tetra Pack Straw Pasting	CH-190 SB	Suitable for bonding on polyester/PE to paper/Board/Coated Paper. Not affected by extreme hot (40 °C) & cold (0 °C) environment.	Snow White Granules	2000 ± 500 cps	140 - 160 °C	90 ± 5 °C
Tetra Pack LID Fixing	CH-190 LF	Suitable for fixing of Cap / LID in tetra pack bricks.	White Pillows	7000 ± 1000 cps	150 - 170 °C	104 ± 5 °C



**Tetra Pack – Lid Fixing**



**Tetra Pack – Straw Attachment**

# SPECIALITY HOTMELT

## Hotmelt Adhesives for Air Filter assembly

Chemline provides Hot Melt adhesive for Airfilter / Mini pleat HEPA filter application for bonding of metallic mesh to various other filter media. Also suitable for filter papers, woven and nonwoven fabric, glass fiber paper media etc.

### S a l i e n t F e a t u r e s

Suitable for pleating equipment of different time and speed to meet requirement of different pleat gaps and for various filter media such as PP, Nylon, Polyester etc. Excellent toughness makes filter flexible and in shape. Good thermal resistance.



**Pleating Machine**



**Glue Lines**

**Air Filter Pleating**

# Assembly of Automotive Lamps & Interior with Hotmelt Glue

## Glue Application



## S a l i e n t F e a t u r e s

- It gives strong bonding between PC, PP, PMMA, ABC acrylate
- It also give Temperature resistance between -10 to +65 degree celcius

BRAND - QUIKLOCK <sup>®</sup>				Technical Specifications			
Applications	Grade	Characterstics	Appearance	Viscosity @ 150 °C	Glue Pot Temperature	Softening Point	
Air & Automotive Filter Assembly	<u>CH-9103 JY(3)</u>	Quick bond formation results in higher production. Minimal Fume / Odor. Suitable for Filter applications for bonding of metallic mesh to various filter papers, woven and non-woven fabrics like PP, Nylon, Polyester.					
	<u>CH-9103 JY</u>		Light Yellow Granules	5000 ± 500 cps	150 - 160 °C	115 ± 5 °C	
	<u>CH-9103 JW</u>		Snow White Granules	5000 ± 1000 cps	150 - 160 °C	110 ± 3 °C	
Head / Tail Lamp Assembly	<u>CH-9028 HLG</u>	Suitable for sealing of reflector & transparent glass for head lamp/tail lamp in automotive industry.	Solid Grey/ Black Bricks	70,000 ± 5000 cps	180 - 185 °C	105 ± 3 °C	
	<u>CH-9028 HLG(18)</u>	Suitable for sealing of reflector & transparent glass for head lamp/tail lamp with high heat resistance property.	Solid Grey/ Black Bricks	23,000 ± 3000 cps	190 - 210 °C	130 ± 5 °C	
	<u>CH-9028 HL(W)</u>	Suitable for metal sheet reflector & transparent glass for head lamp/tail lamp with high heat resistance property.	White Bricks	35000 ± 5000 cps	190 - 210 °C	153 ± 3 °C	
Automotive Foam Assembly	<u>SFL-89TYL</u>	Most suitable for pressure sensitive coating / spray application for interior bonding of automotive - felt to felt application	Light Yellow Pillows	5500 ± 500 cps	160 - 180 °C	90 ± 5 °C	



# Hotmelt Adhesives for Mattresses



Foam Assembly with HMPSA



Spring Pocket to Pocket Bonding

## S a l i e n t F e a t u r e s

- It gives strong bond between foam to fabrics in Mattresses
- Excellent thermal stability
- Most suitable for pressure sensitive coating / Spray application for interior bonding of Automotive & Mattresses.

BRAND - QUIKLOCK <sup>®</sup>				Technical Specifications		
Applications	Grade	Characterstics	Appearance	Viscosity @ 150°C	Glue Pot Temperature	Softening Point
WPP Bag Side Sealing	CH-9028 SS9 / SSH9	Most suitable for side sealing of HDPE /PP Woven/BOPP Bags & Non-Woven Bags.	Light Yellow Pillows	50,000 ± 5000 cps	170 - 185 °C	108 ± 3 °C
	CH-9028 SSH / SSH12		Off White Pillows	50,000 ± 5000 cps	170 - 185 °C	135 ± 3 °C
Mattresses - Spring Pocket - Pocket Bonding	CH-135 M6	Most suitable for spring pocket to pocket bonding for nozzle application in mattress.	Light Yellow Granules	4000 ± 1000 cps	150 - 170 °C	80 ± 2 °C

# SPECIALITY HOTMELT

## Hotmelt Adhesives for WPP Bag Side Sealing



### S a l i e n t F e a t u r e s

- It gives strong bond between PP to PP, PP to BOPP. It also gives temperature resistance between -20 to + 60 Degree Celcius.

**Glue Beading** —————





# SPECIALITY HOTMELT



## Hotmelt Adhesives for Shoe Fabric Lamination

### Salient Features

Strong bonding between fabrics and EVA Foam. It can be used for upper & insole manufacturing. Excellent thermal stability at 60 degree Celsius. Water resistance is good, if you dip it water.

### Foam to fabric Lamination



### BRAND - QUIKLOCK®

### Technical Specifications

Applications	Grade	Characterstics	Appearance	Viscosity @ 150°C	Glue Pot Temperature	Softening Point
Shoe Fabric Lamination/Automotive Felt-Felt Application	<u>SFL-89 TY</u>	Lamination of fabrics to EVA Foam & other fabrics for industries such as shoe upper & Insole etc.	White Pillow	4500 ± 500 cps	150 - 160 °C	90 ± 5 °C





## Anti - Skid Carpet Back Coating and Palletization



Chemline provides Hotmelt adhesives for antiskid carpets and palletization which is solvent free, easily processed, fast curing, slight coating, good washability, excellent antiskid performance.

### S a l i e n t F e a t u r e s

- It is non-sticky after de-palletizing. High thrmstability and good flexibility. Suitable for Spray application.

BRAND - QUIKLOCK <sup>®</sup>				Technical Specifications		
Applications	Grade	Characterstics	Appearance	Viscosity @ 150°C	Glue Pot Temperature	Softening Point
Anti-Skid Palletisation	<u>AS - 3090 W</u>	Film of adhesive has got anti- skid properties. No String Formation during usage.	White Pillows/ Bricks	35,000 ± 5000 cps	150 - 180 °C	113 ± 3 °C







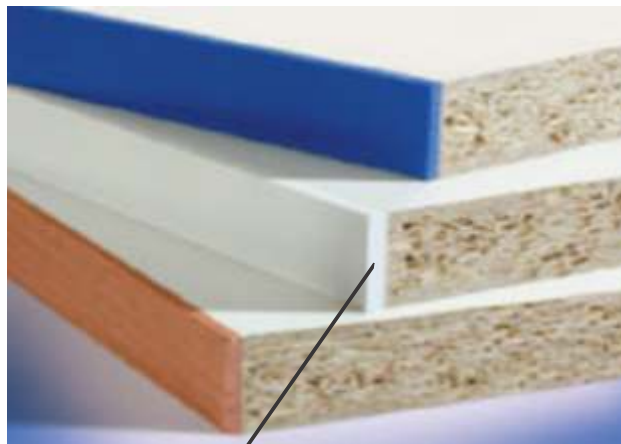


### S a l i e n t F e a t u r e s

- Suitable for manual automatic edge banding machine
- Immediate good re-melting behavior
- Unaffected with extreme hot climate
- High bonding and peel strength

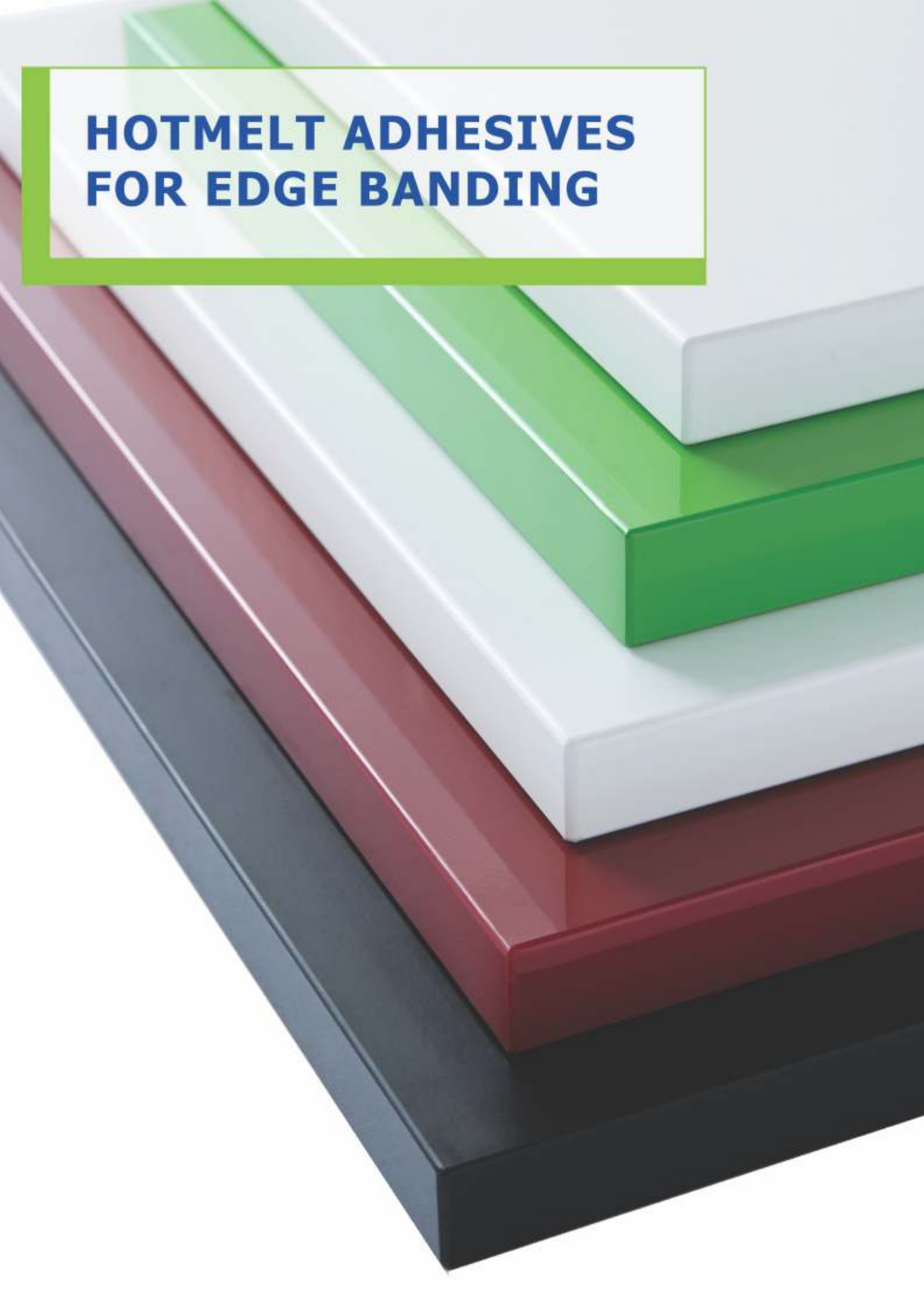
Chemline provides Hotmelt adhesives for manual and edge banding machines. It gives superior coverage, excellent finishing and long durable bond which is unaffected under extreme atmospheric conditions. It gives superior bonding with PVC, ABS on MDF or Particle Board.

BRAND - QUIKLOCK <sup>®</sup>				Technical Specifications		
Applications	Grade	Characterstics	Appearance	Viscosity @ 150 °C	Glue Pot Temperature	Softening Point
Edge banding for Wood	<u>CH-8530 WA</u>	Suitable for strong bond between Wood to Leather / PVC / Fabric. Higher coverage.	Light Yellow Granules	25000 ± 5000 cps	150 - 170 °C	87 ± 5 °C
	<u>CH-8520 WA</u>		Light Cream Granules	20000 ± 3000 cps	130 - 140 °C	83 ± 5 °C



**Edge Banding Glue Application**

# **HOTMELT ADHESIVES FOR EDGE BANDING**



# HOTMELT ADHESIVES FOR VARIOUS APPLICATIONS



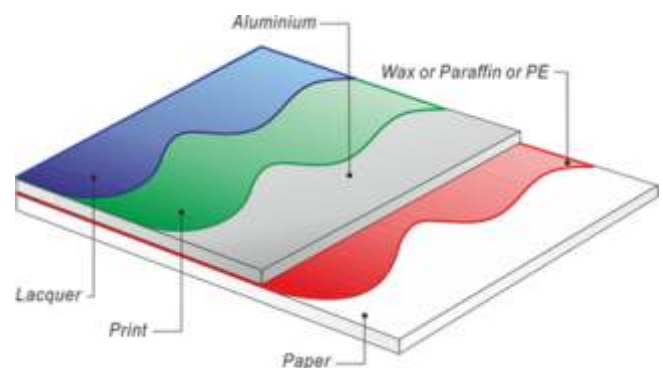
**Hot Foil Stamping**



**Geo Textiles**



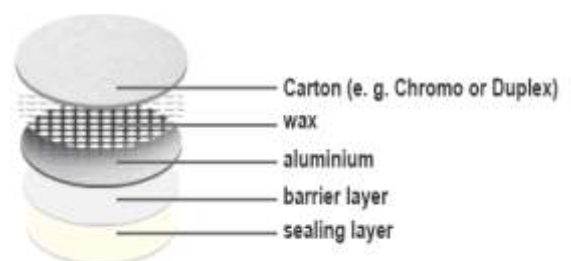
**Soap Wrapper Coating**



**Lamination Wax**



**WAD Fixing**



**Lamination Wax**





## Shrink Sleeves Tube Making

### Lamination wax for WAD/Induction Sealing

- Gives good bond between foil and board.
- Gives complete Delamination of foil from bond during induction process.

### GEO - Textile

- Suitable for bonding between HDPE film and PP non woven
- Gives flexible coating with higher coverage.

### Hot Foil Stamping

- Suitable for Foil Stamping.
- Higher coverage

BRAND - QUIKLOCK <sup>®</sup>				Technical Specifications			
Applications	Grade	Characterstics	Appearance	Viscosity @ 150°C	Glue Pot Temperature	Softening Point	
Lamination Wax for Butter Packaging	<u>CH-850 LW / LY</u>	Suitable for butter wrapping paper & lamination of Al Foil to non treated vegetable parchment paper for purpose of food packaging & WAD	Light Yellow/White Pillow & Bricks	40 ± 10 cps	120 - 130 °C	75 ± 5 °C	
Lamination Wax for WAD Making	<u>CH-800 W</u>	Good bond with board in case of lamination wax CH - 800 W. Complete delamination of foil from board during induction process	Water White After Melting	100 ± 20 cps	125 - 150 °C	103 ± 5 °C	
Induction Sealing for WAD	<u>CH -135 W (IS)</u>		Light Yellow Granules	1200 ± 500 cps	130 - 140 °C	75 ± 5 °C	
Shrink Label Tubes	<u>CH-LS 30</u>	Suitable for Sealing of open mouth of PET Bottle to Al Foil. It will also used for making of shrink label tubes.	Light Yellow Granules	1800 ± 300 cps	140 - 160 °C	80 ± 5 °C	
Geo-Textiles	<u>CH-205 GT</u>	Flexible Coating with higher coverage. Suitable for bonding between HDPE film and PP Non-Woven.	Light Yellow Pillows	6500 ± 1000 cps	150 - 160 °C	115 ± 5 °C	
Hot Foil Stamping	<u>CH-150</u>	Suitable for Foil Stamping.	Light Yellow Granules	5000 ± 1000 cps	140 - 160 °C	80 ± 5 °C	



## Chemline India Ltd.

F-1, Sarda Chamber-1, Central Market, Prashant Vihar, Rohini,  
Delhi-110085 (INDIA) Ph : +91-11-27555991 - 99  
Fax : +91-11-27555992  
Website : [www.chemlineglobal.com](http://www.chemlineglobal.com)

Enquiry from India For Bottle Labelling :

[sales@chemlineglobal.com](mailto:sales@chemlineglobal.com)

For Graphic Arts Products :

[sales2@chemlineglobal.com](mailto:sales2@chemlineglobal.com)

For Flexible Packaging Products :

[sales3@chemlineglobal.com](mailto:sales3@chemlineglobal.com)

For Speciality Hotmelts :

[hmsales@chemlineglobal.com](mailto:hmsales@chemlineglobal.com)

Enquiry from Countries other than India :

[exports@chemlineglobal.com](mailto:exports@chemlineglobal.com)

Other Miscellaneous Mails :

[info@chemlineglobal.com](mailto:info@chemlineglobal.com)